

“Long Island...runs Eastward
above one hundred miles, and
it is in some places eight, in
some twelve, in some fourteen
miles broad; it is inhabited
from one end to the other.

On the West end is four or five
Dutch towns, the rest being all
English to the number of twelve,
beside villages and Farm houses.”

*A Brief Description of New York,
formerly called New Netherlands*

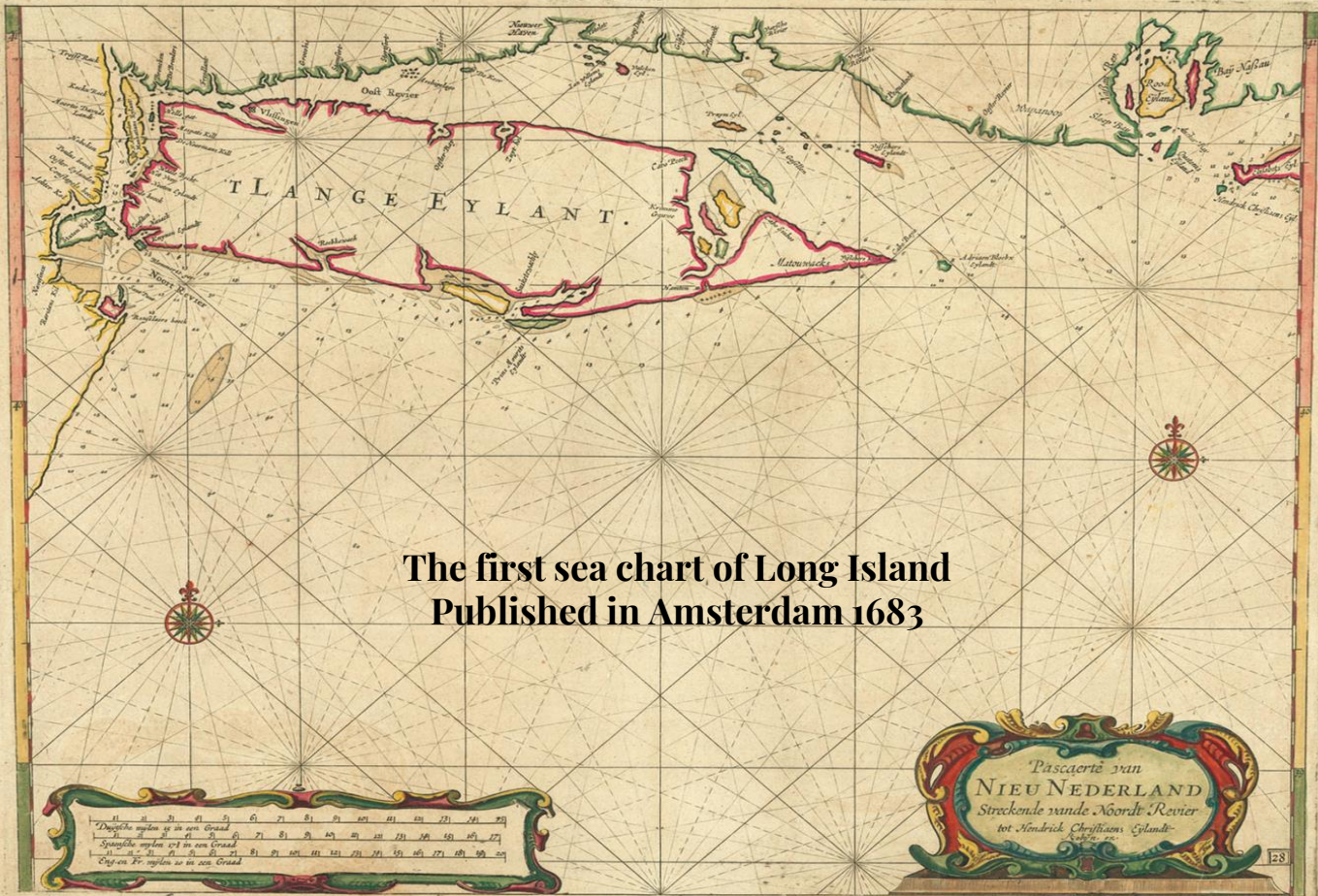
by Daniel Denton

1670

First printed sea chart of the
northeastern seaboard
by an Englishman

Published in Florence
1646





Long Island 1706





1777 North American Map

SMITHTOWN

SMITHTOWN

1873

Scale 1 1/2 Inches to a Mile.





“Bull” Smith’s Ride Mural (1939) by Robert Gaston Herbert

“ It might seem unpardonable not to mention the time honored tradition, that Richard Smith gained his land by making a bargain with the Indians, to have all he could ride around on his trained bull in a day.

and that he took his lunch in a
hollow, ever since called Bread
and Cheese Hollow...”

Huntington Town Records 1653 – 1688 Vol. I
By Charles R. Street
1887

“ Richard Smith was, at the time, claiming all the territory between the head of Cow Harbor (Northport) and the Nasseequague (Smithtown) River.

...An interesting story is told of how the daughter of the grand Montauk sachem Wyandance, who was captured by the Narragansett Indians, and recaptured by Lyon Gardiner, was restored to her father at Richard Smith's house.

In gratitude,
Wyandance granted Richard
Smith, Lyon Gardiner's friend,
all the land Smith could ride
around on a bull in one day,

By starting at sunrise, and
dashing through swamps and
over hill and dale,
by sunset he had done round the
town that now bears his name...”

Records of the Town of Smithtown Long Island

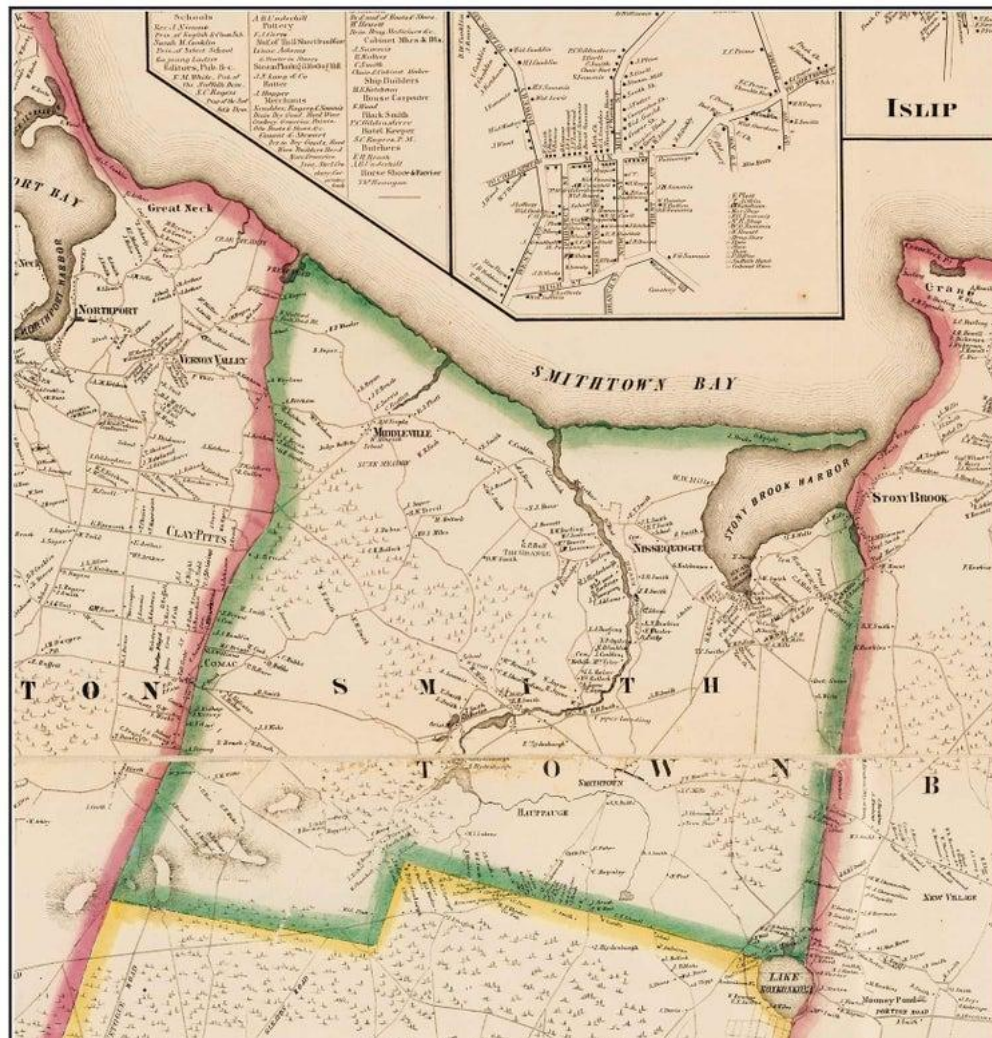
By William S. Pelletreau, A.M.

1898

“It is probable that horses were very rare during the first settlement of this town or not yet introduced: which accounts for Smith’s having to make use of a large bull for many purposes...”

History of Long Island
An account of the Discovery and Settlement
By Benjamin F. Thompson
1839

Smithtown 1858





kpheritagemuseumnet

Leo P. Ostebo Kings Park Herita...



kpheritagemuseumnet

Leo P. Ostebo Kings Park Herita...



On October 29, 2019 the Town of
Smithtown help a re-dedication of the
Smithtown Bull corner.

Legend and Lore Roadside Markers
were installed at the Smithtown Bull
Intersection and on Bread and Cheese
Hollow Road.

Grants for the markers have been
accomplished in partnership with the Leo
P. Ostebo Kings Park Heritage Museum,
The Town of Smithtown and
The William G. Pomeroy Foundation



LEGENDS

& LORE

SMITH'S BULL RIDE

TOWN LIMITS DETERMINED BY
DISTANCE OF ONE DAY RIDE.
LAND WAS GIFT OF MONTAUK
CHIEF FOR ASSISTANCE IN
RETURN OF KIDNAPPED DAUGHTER.

NEW YORK FOLKLORE
WILLIAM C. POMEROY FOUNDATION 2019

61



townofsmithtown
Smithtown, New York



28 likes

townofsmithtown What a banner day for Whisper the Bull! Today we celebrated the completion of the work to restore our landmark after a Christmas Eve car accident damaged the masonry and landscaping.
[#smithtown](#) [#whisperthebull](#)
[#smithtownbull](#) [#historic](#) [#legends](#)
[#lore](#)



LEGENDS

& LORE

RICHARD SMITH

RESTED HERE DURING
HIS LEGENDARY BULL RIDE
LUNCHEON ON BREAD AND
CHEESE GIVING VALLEY
AND ROAD THEIR NAMES.

NEW YORK FOLKLORE

WILLIAM C. POMEROY FOUNDATION 2019



THE BLUFF
and
THE RIVER





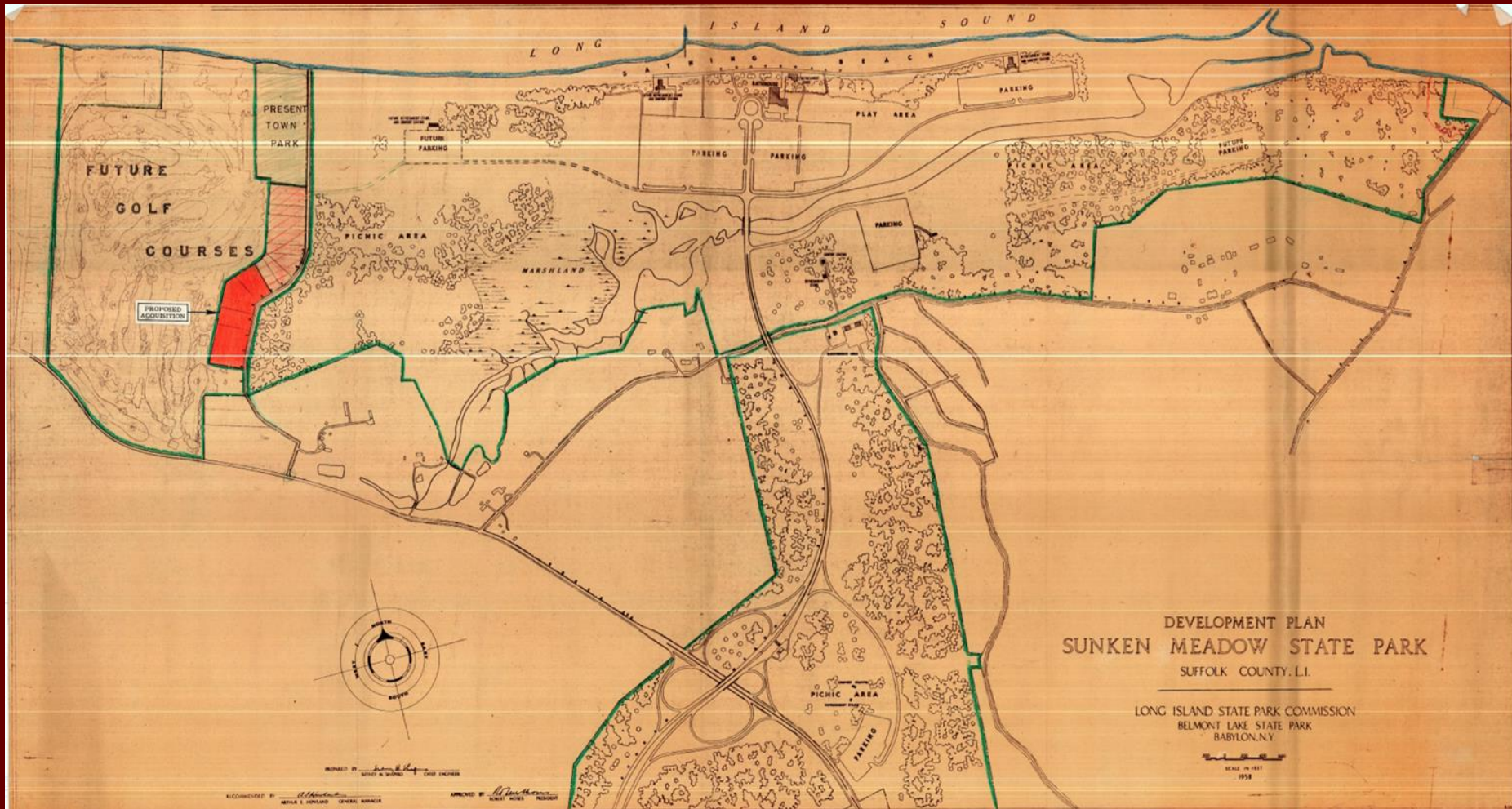









SUNKEN MEADOW



DEVELOPMENT PLAN
SUNKEN MEADOW STATE PARK
SUFFOLK COUNTY, LI.

LONG ISLAND STATE PARK COMMISSION
BELMONT LAKE STATE PARK
BABYLON, N.Y.



SCALE IN FEET
1951

--- EXISTING CONTOURS
 --- FINISHED CONTOURS

MEADOW

SUNKEN

SEE SHEET 7D79-02 FOR
 TYPICAL FINISHED SECTION
 OF BORROW AREA

LIMIT OF BORROW AREA

CONSTRUCT EARTH
 DAM - ITEM 24

METAL END
 SECTIONS - ITEM 115

SHOULDER CONTOUR
 LINES - ITEM 116

30" DIA. CEMENT

END OF DEADEND
 CREEK

CREEK

Q ROCK

EXISTING LIMIT OF TOPSOIL & SAND

TOPSOIL - ITEM 114

SAND - ITEM 25

EAST
 OVERLOOK
 PARKING
 FIELD

SUNKEN MEADOW STATE PARK
 CONTRACT NO. SMP 59-2
 PARKING FIELD EXTENSION & MISC. WORK

IN CHARGE OF
 J. J. SWEENEY
 Design By: J. J. S.
 Check By: J. J. S.
 Checked By: G. E. B.

Date: July 1988

LONG ISLAND STATE PARK COMMISSION
 BELMONT LAKE STATE PARK
 BABYLON

DRAWING NO.
 7D79-5
 SCALE
 1" = 50'-0"

BORROW
 AREA



ST. JOHNSLAND L.I.

1971











Town Beach Bridge, Kings Park, L. I.



Sunken Meadow, Kings Park, N. Y.







FORT SALONGA

“In 1664, when the Dutch surrendered to the English, the people of Long Island became subject to the Duke of York.

The well ordered condition of affairs in Huntington suffered serious disruption.

The people protested strongly against the injustice of Richard Nicolls, who was Colonel Governor for a time.

A spirit of rebellion was rife, and in 1681, Governor Sir Edmund Andros denounced a petition circulating “as scandalous and illegal,” and destroyed it by fire.

He also imprisoned several leading citizens for signing it.

The people encouraged those imprisoned to stand by their convictions by paying them wages while in prison and voting them damages on their release.

Three of the imprisoned persons were Issac Platt, Epenetus Platt and Jonas Wood.

The descendants of these men are now and always have been prominent in town and county affairs.

The people entered with spirit into the
War of Independence.

They began preparations so early that in
May 2, 1775, eighty well trained men were
ready for the field. “

“Henry Scudder was a great and fortunate spy.

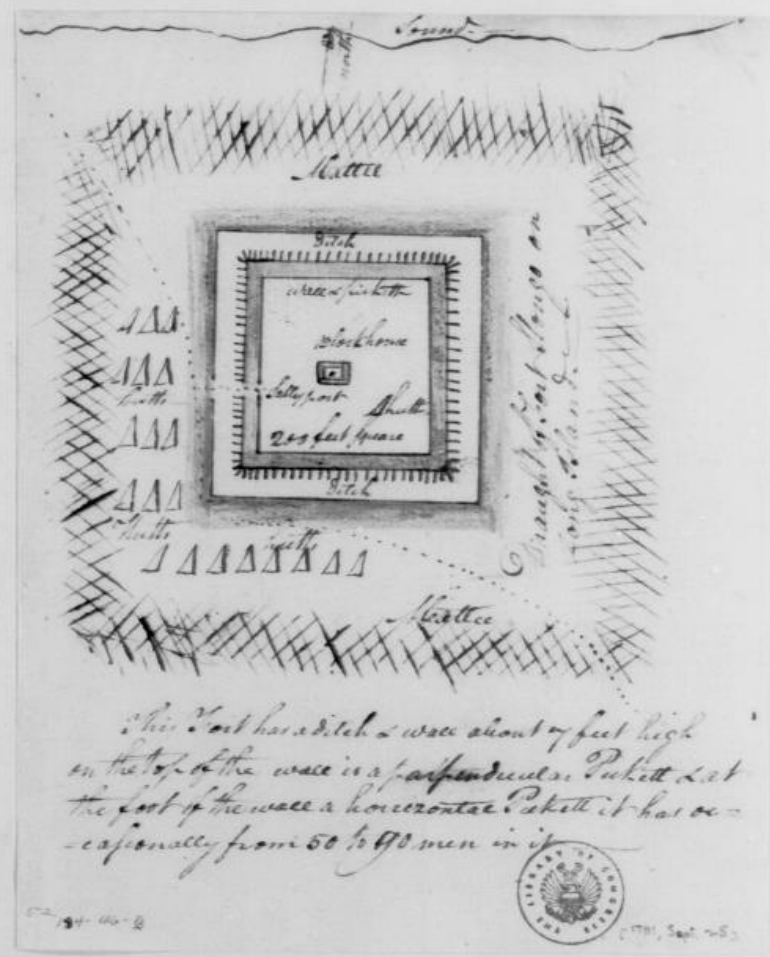
He frequently entered the British camp and
obtained important information.

He drew a perfect diagram of Fort Slongo, at
Fresh Pond, which was of great value.”

The Brooklyn Daily Eagle
Sunday March 1, 1884

Map of Fort Slongo,
New York

Image 3 of George
Washington Papers,
Series 4, General
Correspondence:
Benjamin Tallmadge
to Leumuel Trescott
September 25, 1781.
Library of Congress



“Smithtown, when the war for
independence began, had a
population of 716.

....Living to a great extent by themselves,
making their own little laws,

and apparently regardless of

whether the continent was in the hands of
the English, the Dutch or the Continentals,

one would have thought that the
interest of Smithtown in the
Revolutionary movement would
have been passive.

But the opposite was the case,
and nowhere on Long Island was there to
be found a greater proportion of patriots.

In fact, when the time came for men to
declare themselves, only 15 Loyalists were
to be found in the town....”

*...A History of Long Island: From its Earliest
Settlement to the Present Time*

by William S. Pelletreau, A.M.

Vol II 1905

“On the night of October 2, 1781, Major Tallmadge dispatched, against the British Fort Slongo, a whale boat expedition under Major Trescott.

It resulted in its capture the next morning without the loss of a man.”

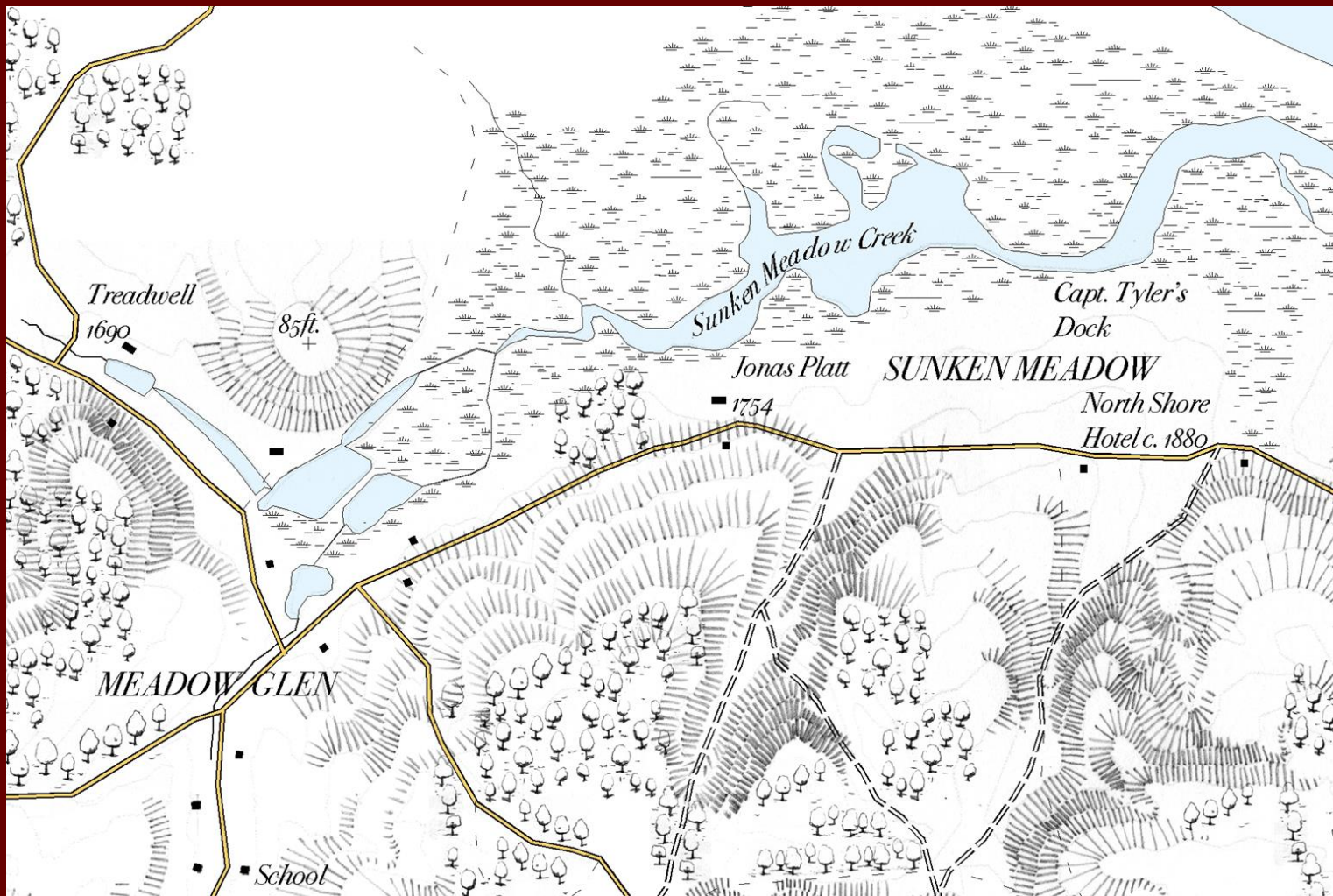
“The night the fort was taken the officers were enjoying themselves in a dance ... in the Mulford house near the fort This carouse of the officers made the work of the capture an easier one.

Before the assaulting a smaller detachment had crossed the sound with muffled oars from the mouth of Saugatuck river and landed at Crab Meadow, some distance west of the fort, near the farm of Nathaniel Skidmore, who guided them to it.

... the following night the attack was made with a successful capture.

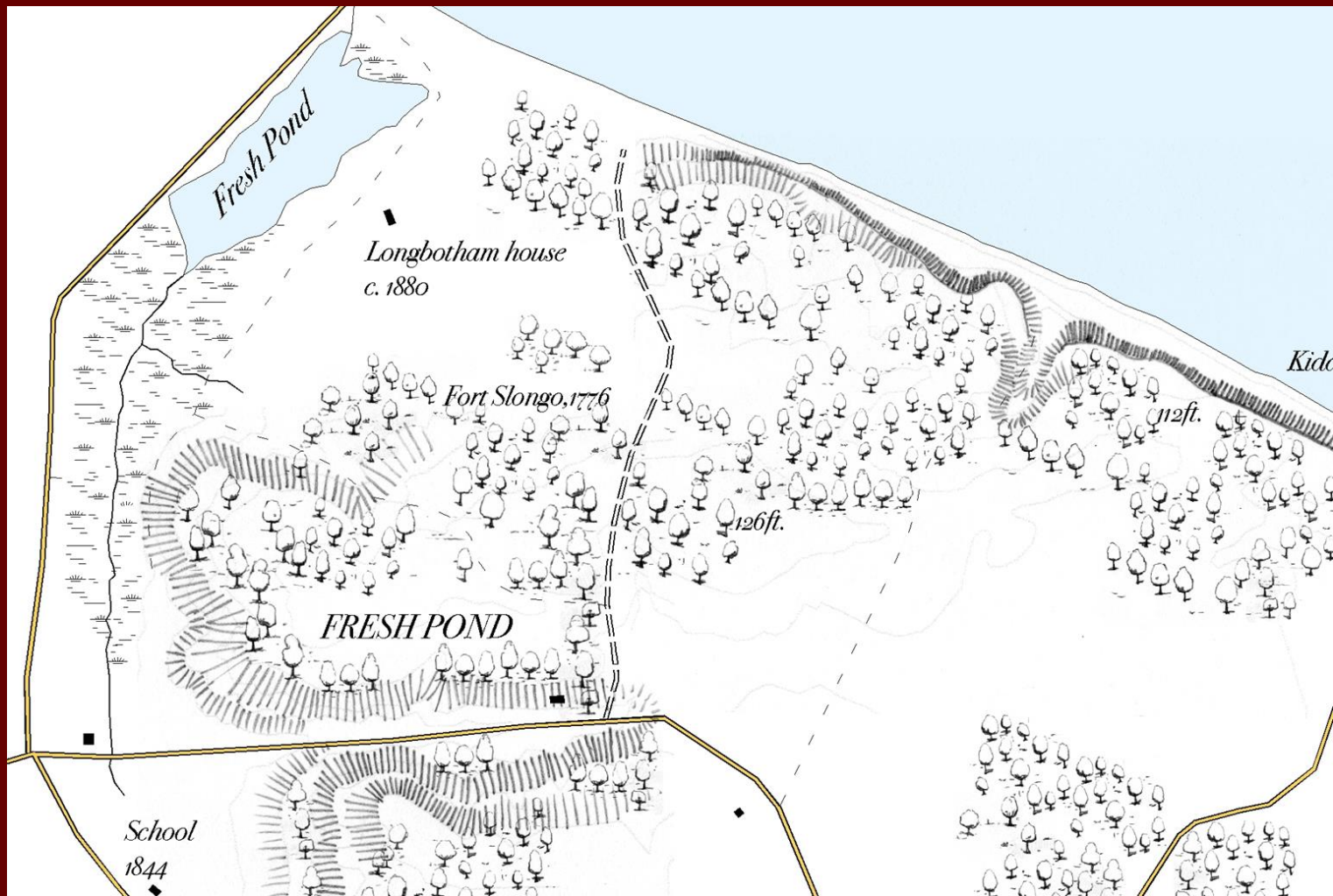
The sentry, when alarmed, discharged his gun and retreated into the fort so precipitately, that he forgot to close the gate behind him.”

The Brooklyn Daily Eagle
Sunday March 29, 1896

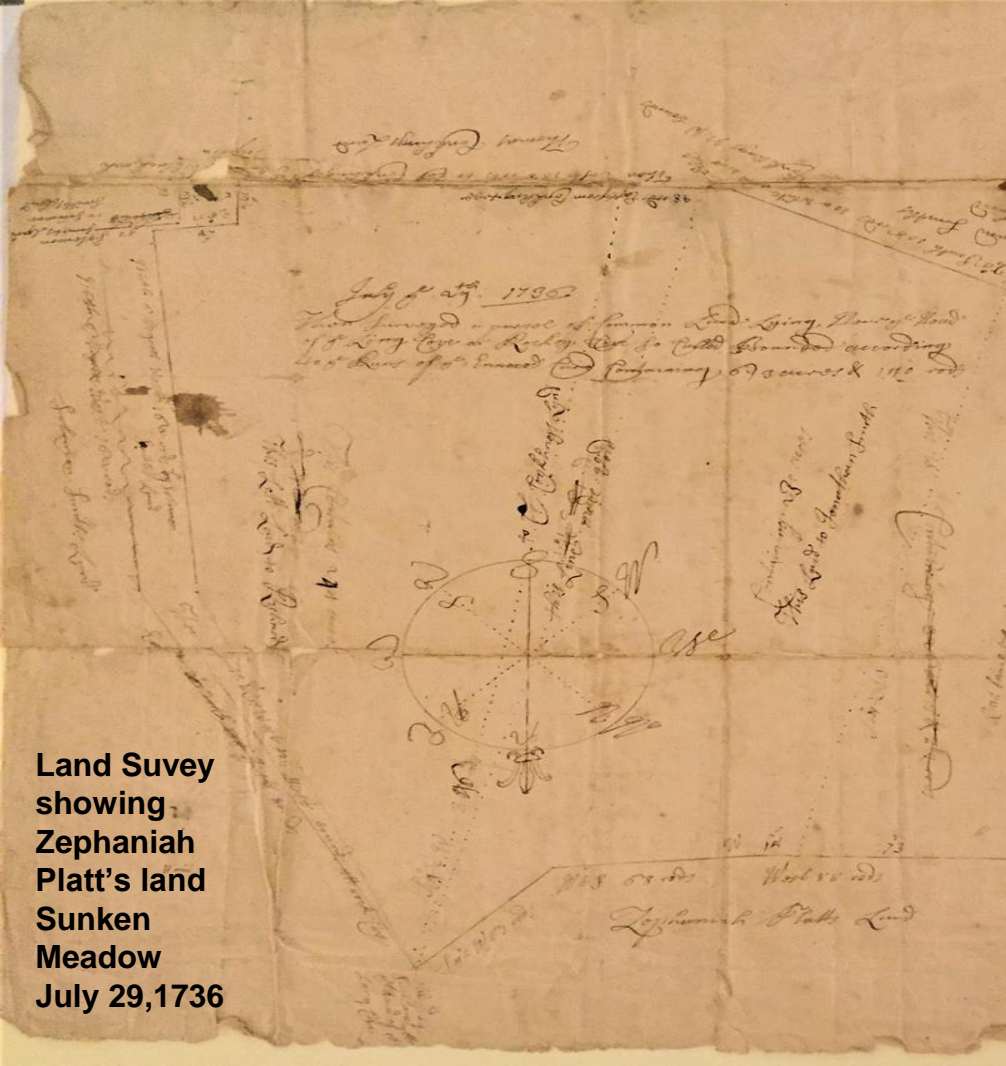


43/

For the Indenture made this Ninth day of July in the fourth year
of the Reign of our Sovereign Lord George over Great Britain
King and in the Year of our Lord Christ one thousand Seven
and Eighteen Between Richard Smith of Southtown in the County
of Norfolk on the Island of Nevis in the Colony of New York
the one part And Jonas Platt of the Town of Huntingdon in the
Said Colony of aught good on the other part Witnesseth that the
Said Richard Smith for in Consideration of the Sum of three hundred
Pounds Current money of New York Colony To him in hand paid
before the signing & delivery of these presents The receipt whereof
doth the S^d Richard Smith do hereby acknowledge himself to be
therewith fully satisfied contented & paid & thereof of every part
paise & thereof do hereby Acquitt & discharge the S^d Jonas
Platt his heirs & Assigns Grant bargain sell assign
Disposse and confirmed and by these presents do fully freely Cleare
And absolutely Give Grant bargain sell assign Disposse release
and confirm unto the S^d Jonas Platt his heirs & Assigns forever
All that certain tract of upland Situated lying & adjoining to
the S^d Jonas Platt's Land at Antigua meadows southerly from the
S^d Jonas Platt's house containing by estimation thirty Acres with
allowance for highway passing & improved &c.



Land Suvey
showing
Zephaniah
Platt's land
Sunken
Meadow
July 29, 1736



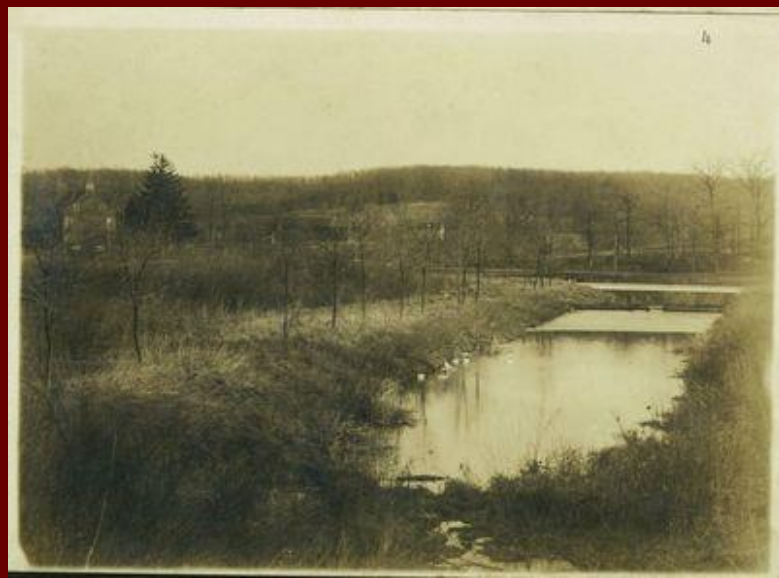






The Munder house, formerly Winston Churchill's mother's American summer home.









ST. JOHN LAND

1166 (2) 3
John Wood, Clerk

16 States Air Stamp \$14.00

This Indenture

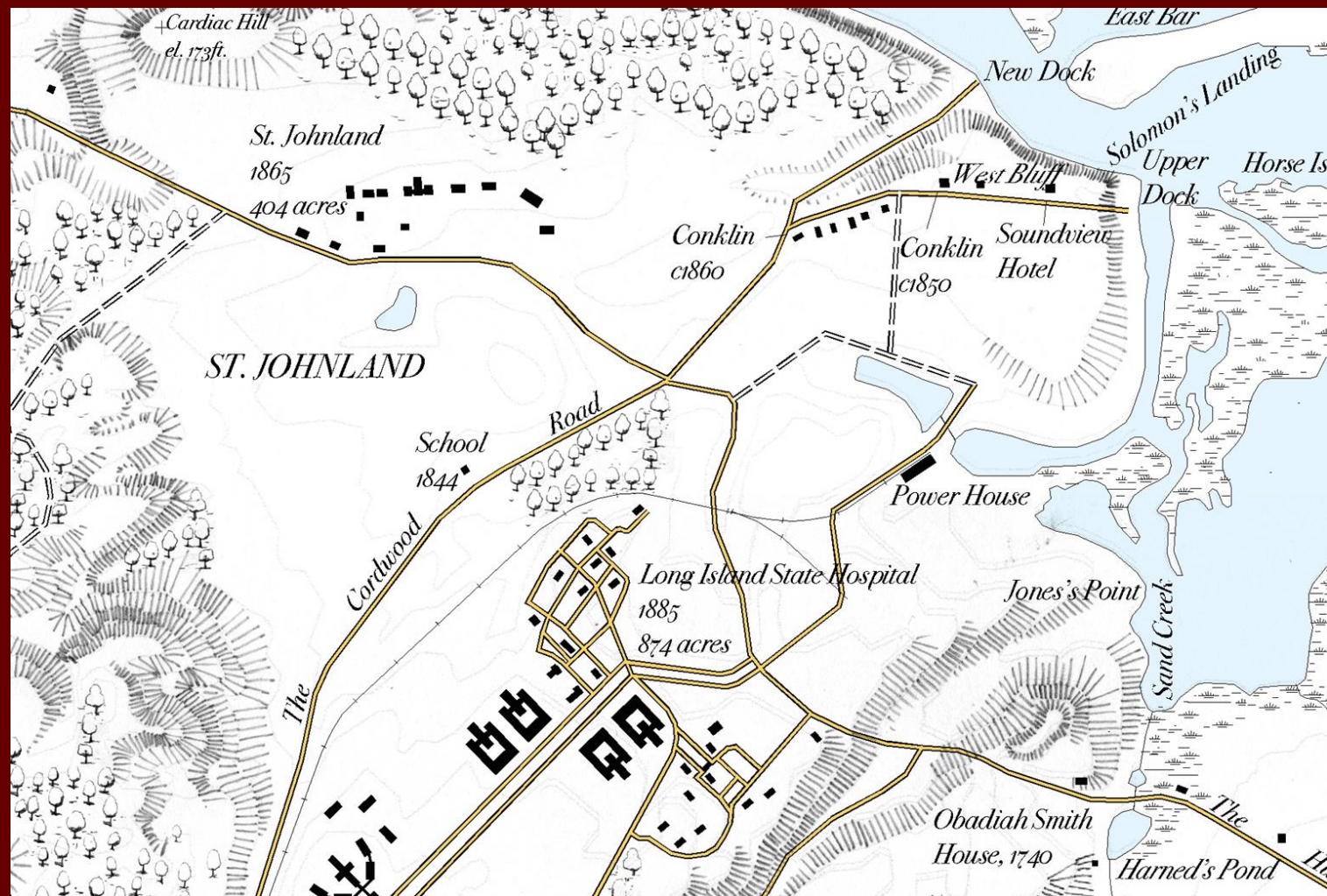
Made the tenth day of February

in the year of our Lord one thousand eight hundred
and sixty six Between Edmund Smith of the city
of New York Nancy C Smith widow of Edmund C
Smith late of the town of Smithtown County of Suffolk
and State of New York and Frederick J Smith son
Anne M Smith his wife of the said town of Smith
town of the first part and William A Muhlenberg
of the City of New York of the second part Witnesseth
That the said parties of the first part for and in con-
sideration of the sum of Fourteen Thousand Dollars law-
money of the United States of America to them in
the said party of the second part at or before
these presents the receipt

W.A.M.

St. Johnland
Deed
Feb 10 1866
Between
Edmund
Smith and
Rev. Dr.
William A.
Muhlenberg







THE EDWIN GOULD COTTAGE FOR GIRLS AND BOYS



THE INFIRMARY







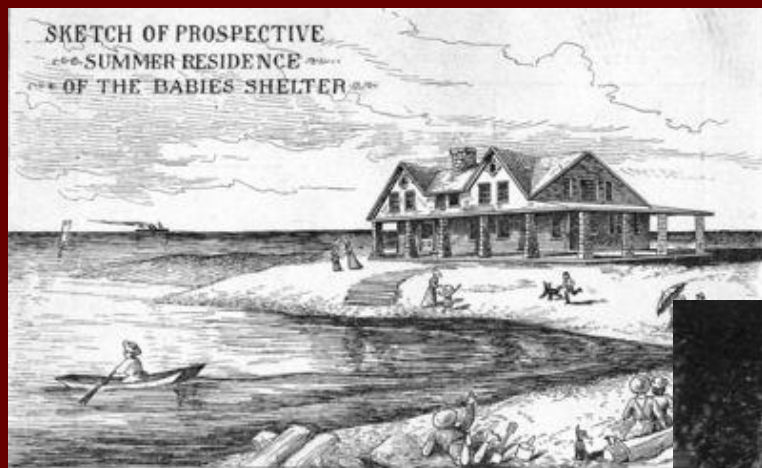




VIEW OF SAINT JOHN ISLAND, KINGS PARK, L.I.

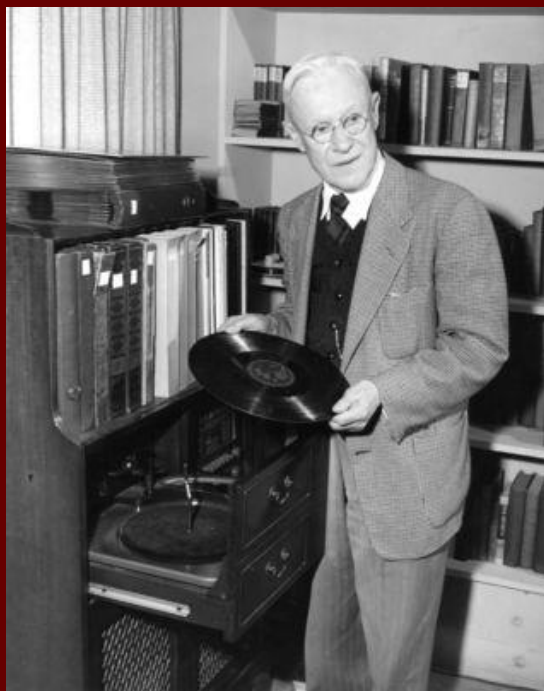










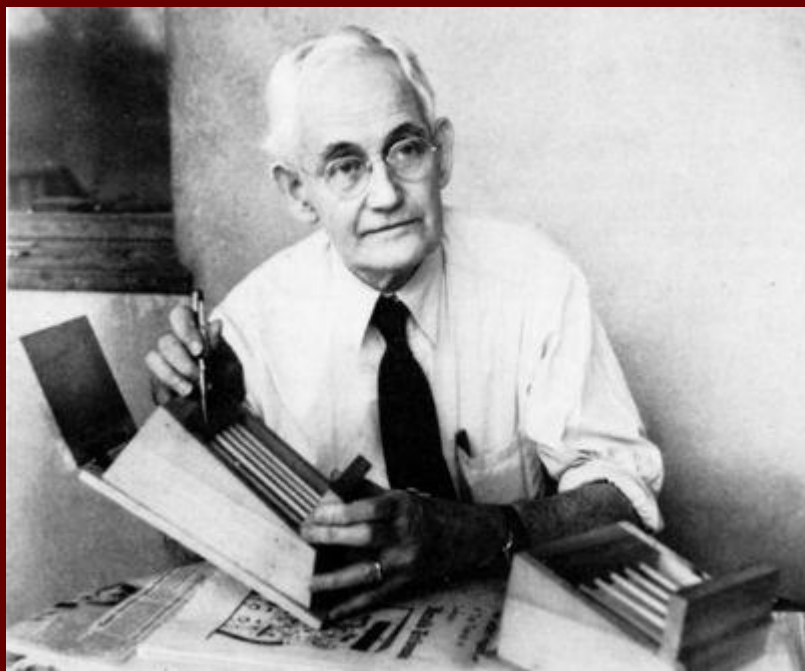
















THE RAILROAD

This Deed

(L.S.R.S. to the same)

Made the Twentieth day of February in the year of
Our Lord and thousand eight hundred and seventy seven. Return
Elija Soper widow of Jesse Soper and Ebenezer Soper son of
said Jesse Soper deceased and Frederick Whitman as
Mortgagee of the Town of Smithtown County of Suffolk and
State of New York of the said park and the Smithtown and Port
Jefferson Rail Road Company of the several parts. Whereas
that the said parties of the said park in consideration of the
sum of Twenty five dollars for the land and Fifty four dollars
for making the fence to them duly paid before the delivery
hereof have bargained and sold and by these presents do
grant and convey to the said The Smithtown and Port Jefferson
Rail Road Company its Successors and assigns forever

Train
Station
property
deed
Feb 20 1872

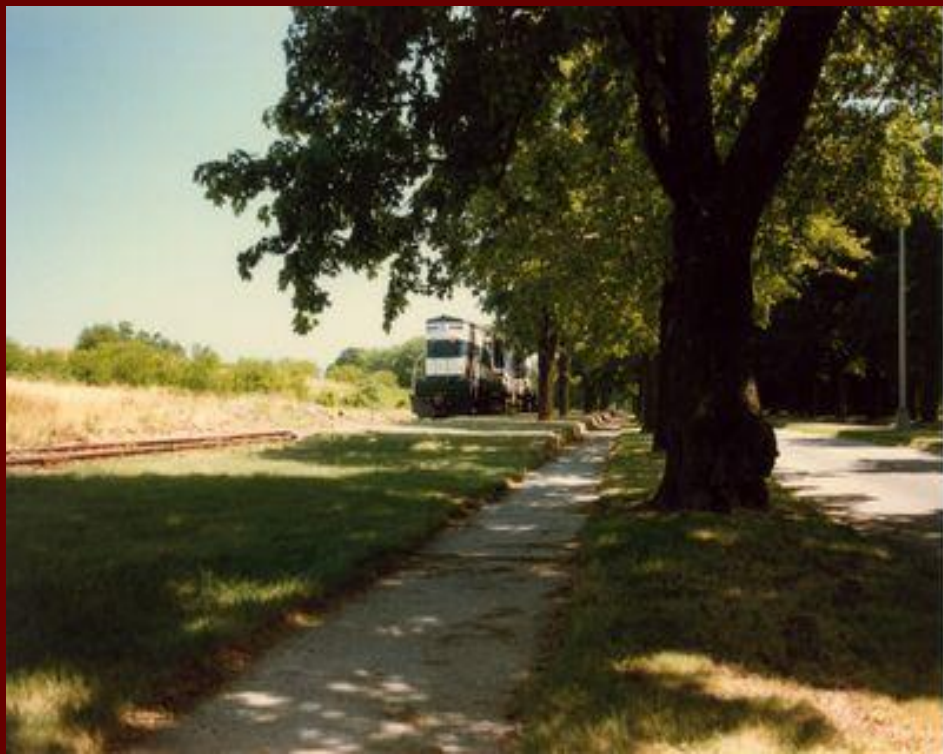
Between
Ebenezer
Soper and
Smithtown
and Port
Jefferson
Railroad
company













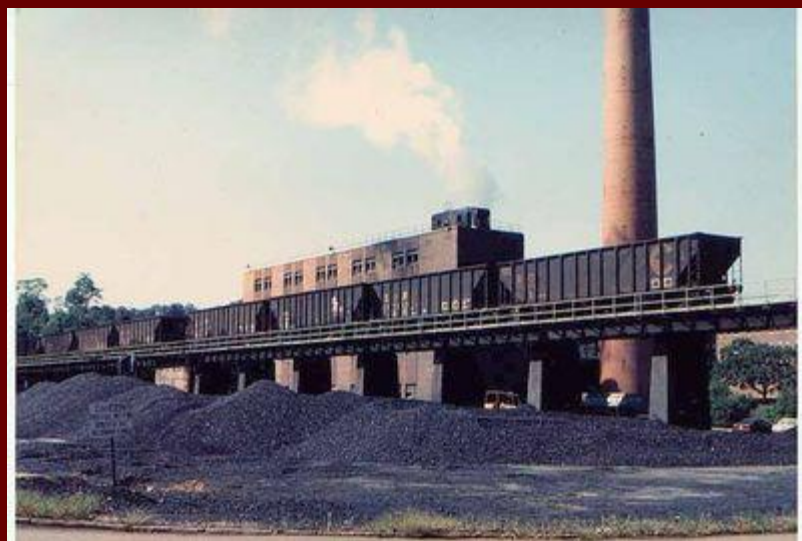


No. 2—R. R. Station, Kings Park, L. I., N. Y.

T. J. MCCARTHY







KINGS PARK
STATE
HOSPITAL

MAP OF
THE
Kings County Farm.
SITUATED AT
St Johnland
Surrey
L.I.

Surveyed and laid out by J. H. ...



Scale = 1 inch = 1 mile

- Explanatory
to the Survey of the
Kings County Farm
L.I.
- 1. The Farm
 - 2. The River
 - 3. The Road
 - 4. The Canal
 - 5. The Bridge
 - 6. The Mill
 - 7. The Church
 - 8. The School
 - 9. The House
 - 10. The Barn
 - 11. The Garden
 - 12. The Pond
 - 13. The Field
 - 14. The Wood
 - 15. The Stream
 - 16. The Path
 - 17. The Wall
 - 18. The Fence
 - 19. The Gate
 - 20. The Tower
 - 21. The Chapel
 - 22. The Vault
 - 23. The Crypt
 - 24. The Tomb
 - 25. The Monument
 - 26. The Obelisk
 - 27. The Column
 - 28. The Statue
 - 29. The Fountain
 - 30. The Well
 - 31. The Cistern
 - 32. The Spring
 - 33. The Lake
 - 34. The Loch
 - 35. The Pool
 - 36. The Pond
 - 37. The Stream
 - 38. The River
 - 39. The Canal
 - 40. The Road
 - 41. The Bridge
 - 42. The Mill
 - 43. The Church
 - 44. The School
 - 45. The House
 - 46. The Barn
 - 47. The Garden
 - 48. The Pond
 - 49. The Field
 - 50. The Wood
 - 51. The Stream
 - 52. The Path
 - 53. The Wall
 - 54. The Fence
 - 55. The Gate
 - 56. The Tower
 - 57. The Chapel
 - 58. The Vault
 - 59. The Crypt
 - 60. The Tomb
 - 61. The Monument
 - 62. The Obelisk
 - 63. The Column
 - 64. The Statue
 - 65. The Fountain
 - 66. The Well
 - 67. The Cistern
 - 68. The Spring
 - 69. The Lake
 - 70. The Loch
 - 71. The Pool
 - 72. The Pond
 - 73. The Stream
 - 74. The River
 - 75. The Canal
 - 76. The Road
 - 77. The Bridge
 - 78. The Mill
 - 79. The Church
 - 80. The School
 - 81. The House
 - 82. The Barn
 - 83. The Garden
 - 84. The Pond
 - 85. The Field
 - 86. The Wood
 - 87. The Stream
 - 88. The Path
 - 89. The Wall
 - 90. The Fence
 - 91. The Gate
 - 92. The Tower
 - 93. The Chapel
 - 94. The Vault
 - 95. The Crypt
 - 96. The Tomb
 - 97. The Monument
 - 98. The Obelisk
 - 99. The Column
 - 100. The Statue
 - 101. The Fountain
 - 102. The Well
 - 103. The Cistern
 - 104. The Spring
 - 105. The Lake
 - 106. The Loch
 - 107. The Pool
 - 108. The Pond
 - 109. The Stream
 - 110. The River
 - 111. The Canal
 - 112. The Road
 - 113. The Bridge
 - 114. The Mill
 - 115. The Church
 - 116. The School
 - 117. The House
 - 118. The Barn
 - 119. The Garden
 - 120. The Pond
 - 121. The Field
 - 122. The Wood
 - 123. The Stream
 - 124. The Path
 - 125. The Wall
 - 126. The Fence
 - 127. The Gate
 - 128. The Tower
 - 129. The Chapel
 - 130. The Vault
 - 131. The Crypt
 - 132. The Tomb
 - 133. The Monument
 - 134. The Obelisk
 - 135. The Column
 - 136. The Statue
 - 137. The Fountain
 - 138. The Well
 - 139. The Cistern
 - 140. The Spring
 - 141. The Lake
 - 142. The Loch
 - 143. The Pool
 - 144. The Pond
 - 145. The Stream
 - 146. The River
 - 147. The Canal
 - 148. The Road
 - 149. The Bridge
 - 150. The Mill
 - 151. The Church
 - 152. The School
 - 153. The House
 - 154. The Barn
 - 155. The Garden
 - 156. The Pond
 - 157. The Field
 - 158. The Wood
 - 159. The Stream
 - 160. The Path
 - 161. The Wall
 - 162. The Fence
 - 163. The Gate
 - 164. The Tower
 - 165. The Chapel
 - 166. The Vault
 - 167. The Crypt
 - 168. The Tomb
 - 169. The Monument
 - 170. The Obelisk
 - 171. The Column
 - 172. The Statue
 - 173. The Fountain
 - 174. The Well
 - 175. The Cistern
 - 176. The Spring
 - 177. The Lake
 - 178. The Loch
 - 179. The Pool
 - 180. The Pond
 - 181. The Stream
 - 182. The River
 - 183. The Canal
 - 184. The Road
 - 185. The Bridge
 - 186. The Mill
 - 187. The Church
 - 188. The School
 - 189. The House
 - 190. The Barn
 - 191. The Garden
 - 192. The Pond
 - 193. The Field
 - 194. The Wood
 - 195. The Stream
 - 196. The Path
 - 197. The Wall
 - 198. The Fence
 - 199. The Gate
 - 200. The Tower
 - 201. The Chapel
 - 202. The Vault
 - 203. The Crypt
 - 204. The Tomb
 - 205. The Monument
 - 206. The Obelisk
 - 207. The Column
 - 208. The Statue
 - 209. The Fountain
 - 210. The Well
 - 211. The Cistern
 - 212. The Spring
 - 213. The Lake
 - 214. The Loch
 - 215. The Pool
 - 216. The Pond
 - 217. The Stream
 - 218. The River
 - 219. The Canal
 - 220. The Road
 - 221. The Bridge
 - 222. The Mill
 - 223. The Church
 - 224. The School
 - 225. The House
 - 226. The Barn
 - 227. The Garden
 - 228. The Pond
 - 229. The Field
 - 230. The Wood
 - 231. The Stream
 - 232. The Path
 - 233. The Wall
 - 234. The Fence
 - 235. The Gate
 - 236. The Tower
 - 237. The Chapel
 - 238. The Vault
 - 239. The Crypt
 - 240. The Tomb
 - 241. The Monument
 - 242. The Obelisk
 - 243. The Column
 - 244. The Statue
 - 245. The Fountain
 - 246. The Well
 - 247. The Cistern
 - 248. The Spring
 - 249. The Lake
 - 250. The Loch
 - 251. The Pool
 - 252. The Pond
 - 253. The Stream
 - 254. The River
 - 255. The Canal
 - 256. The Road
 - 257. The Bridge
 - 258. The Mill
 - 259. The Church
 - 260. The School
 - 261. The House
 - 262. The Barn
 - 263. The Garden
 - 264. The Pond
 - 265. The Field
 - 266. The Wood
 - 267. The Stream
 - 268. The Path
 - 269. The Wall
 - 270. The Fence
 - 271. The Gate
 - 272. The Tower
 - 273. The Chapel
 - 274. The Vault
 - 275. The Crypt
 - 276. The Tomb
 - 277. The Monument
 - 278. The Obelisk
 - 279. The Column
 - 280. The Statue
 - 281. The Fountain
 - 282. The Well
 - 283. The Cistern
 - 284. The Spring
 - 285. The Lake
 - 286. The Loch
 - 287. The Pool
 - 288. The Pond
 - 289. The Stream
 - 290. The River
 - 291. The Canal
 - 292. The Road
 - 293. The Bridge
 - 294. The Mill
 - 295. The Church
 - 296. The School
 - 297. The House
 - 298. The Barn
 - 299. The Garden
 - 300. The Pond
 - 301. The Field
 - 302. The Wood
 - 303. The Stream
 - 304. The Path
 - 305. The Wall
 - 306. The Fence
 - 307. The Gate
 - 308. The Tower
 - 309. The Chapel
 - 310. The Vault
 - 311. The Crypt
 - 312. The Tomb
 - 313. The Monument
 - 314. The Obelisk
 - 315. The Column
 - 316. The Statue
 - 317. The Fountain
 - 318. The Well
 - 319. The Cistern
 - 320. The Spring
 - 321. The Lake
 - 322. The Loch
 - 323. The Pool
 - 324. The Pond
 - 325. The Stream
 - 326. The River
 - 327. The Canal
 - 328. The Road
 - 329. The Bridge
 - 330. The Mill
 - 331. The Church
 - 332. The School
 - 333. The House
 - 334. The Barn
 - 335. The Garden
 - 336. The Pond
 - 337. The Field
 - 338. The Wood
 - 339. The Stream
 - 340. The Path
 - 341. The Wall
 - 342. The Fence
 - 343. The Gate
 - 344. The Tower
 - 345. The Chapel
 - 346. The Vault
 - 347. The Crypt
 - 348. The Tomb
 - 349. The Monument
 - 350. The Obelisk
 - 351. The Column
 - 352. The Statue
 - 353. The Fountain
 - 354. The Well
 - 355. The Cistern
 - 356. The Spring
 - 357. The Lake
 - 358. The Loch
 - 359. The Pool
 - 360. The Pond
 - 361. The Stream
 - 362. The River
 - 363. The Canal
 - 364. The Road
 - 365. The Bridge
 - 366. The Mill
 - 367. The Church
 - 368. The School
 - 369. The House
 - 370. The Barn
 - 371. The Garden
 - 372. The Pond
 - 373. The Field
 - 374. The Wood
 - 375. The Stream
 - 376. The Path
 - 377. The Wall
 - 378. The Fence
 - 379. The Gate
 - 380. The Tower
 - 381. The Chapel
 - 382. The Vault
 - 383. The Crypt
 - 384. The Tomb
 - 385. The Monument
 - 386. The Obelisk
 - 387. The Column
 - 388. The Statue
 - 389. The Fountain
 - 390. The Well
 - 391. The Cistern
 - 392. The Spring
 - 393. The Lake
 - 394. The Loch
 - 395. The Pool
 - 396. The Pond
 - 397. The Stream
 - 398. The River
 - 399. The Canal
 - 400. The Road
 - 401. The Bridge
 - 402. The Mill
 - 403. The Church
 - 404. The School
 - 405. The House
 - 406. The Barn
 - 407. The Garden
 - 408. The Pond
 - 409. The Field
 - 410. The Wood
 - 411. The Stream
 - 412. The Path
 - 413. The Wall
 - 414. The Fence
 - 415. The Gate
 - 416. The Tower
 - 417. The Chapel
 - 418. The Vault
 - 419. The Crypt
 - 420. The Tomb
 - 421. The Monument
 - 422. The Obelisk
 - 423. The Column
 - 424. The Statue
 - 425. The Fountain
 - 426. The Well
 - 427. The Cistern
 - 428. The Spring
 - 429. The Lake
 - 430. The Loch
 - 431. The Pool
 - 432. The Pond
 - 433. The Stream
 - 434. The River
 - 435. The Canal
 - 436. The Road
 - 437. The Bridge
 - 438. The Mill
 - 439. The Church
 - 440. The School
 - 441. The House
 - 442. The Barn
 - 443. The Garden
 - 444. The Pond
 - 445. The Field
 - 446. The Wood
 - 447. The Stream
 - 448. The Path
 - 449. The Wall
 - 450. The Fence
 - 451. The Gate
 - 452. The Tower
 - 453. The Chapel
 - 454. The Vault
 - 455. The Crypt
 - 456. The Tomb
 - 457. The Monument
 - 458. The Obelisk
 - 459. The Column
 - 460. The Statue
 - 461. The Fountain
 - 462. The Well
 - 463. The Cistern
 - 464. The Spring
 - 465. The Lake
 - 466. The Loch
 - 467. The Pool
 - 468. The Pond
 - 469. The Stream
 - 470. The River
 - 471. The Canal
 - 472. The Road
 - 473. The Bridge
 - 474. The Mill
 - 475. The Church
 - 476. The School
 - 477. The House
 - 478. The Barn
 - 479. The Garden
 - 480. The Pond
 - 481. The Field
 - 482. The Wood
 - 483. The Stream
 - 484. The Path
 - 485. The Wall
 - 486. The Fence
 - 487. The Gate
 - 488. The Tower
 - 489. The Chapel
 - 490. The Vault
 - 491. The Crypt
 - 492. The Tomb
 - 493. The Monument
 - 494. The Obelisk
 - 495. The Column
 - 496. The Statue
 - 497. The Fountain
 - 498. The Well
 - 499. The Cistern
 - 500. The Spring
 - 501. The Lake
 - 502. The Loch
 - 503. The Pool
 - 504. The Pond
 - 505. The Stream
 - 506. The River
 - 507. The Canal
 - 508. The Road
 - 509. The Bridge
 - 510. The Mill
 - 511. The Church
 - 512. The School
 - 513. The House
 - 514. The Barn
 - 515. The Garden
 - 516. The Pond
 - 517. The Field
 - 518. The Wood
 - 519. The Stream
 - 520. The Path
 - 521. The Wall
 - 522. The Fence
 - 523. The Gate
 - 524. The Tower
 - 525. The Chapel
 - 526. The Vault
 - 527. The Crypt
 - 528. The Tomb
 - 529. The Monument
 - 530. The Obelisk
 - 531. The Column
 - 532. The Statue
 - 533. The Fountain
 - 534. The Well
 - 535. The Cistern
 - 536. The Spring
 - 537. The Lake
 - 538. The Loch
 - 539. The Pool
 - 540. The Pond
 - 541. The Stream
 - 542. The River
 - 543. The Canal
 - 544. The Road
 - 545. The Bridge
 - 546. The Mill
 - 547. The Church
 - 548. The School
 - 549. The House
 - 550. The Barn
 - 551. The Garden
 - 552. The Pond
 - 553. The Field
 - 554. The Wood
 - 555. The Stream
 - 556. The Path
 - 557. The Wall
 - 558. The Fence
 - 559. The Gate
 - 560. The Tower
 - 561. The Chapel
 - 562. The Vault
 - 563. The Crypt
 - 564. The Tomb
 - 565. The Monument
 - 566. The Obelisk
 - 567. The Column
 - 568. The Statue
 - 569. The Fountain
 - 570. The Well
 - 571. The Cistern
 - 572. The Spring
 - 573. The Lake
 - 574. The Loch
 - 575. The Pool
 - 576. The Pond
 - 577. The Stream
 - 578. The River
 - 579. The Canal
 - 580. The Road
 - 581. The Bridge
 - 582. The Mill
 - 583. The Church
 - 584. The School
 - 585. The House
 - 586. The Barn
 - 587. The Garden
 - 588. The Pond
 - 589. The Field
 - 590. The Wood
 - 591. The Stream
 - 592. The Path
 - 593. The Wall
 - 594. The Fence
 - 595. The Gate
 - 596. The Tower
 - 597. The Chapel
 - 598. The Vault
 - 599. The Crypt
 - 600. The Tomb
 - 601. The Monument
 - 602. The Obelisk
 - 603. The Column
 - 604. The Statue
 - 605. The Fountain
 - 606. The Well
 - 607. The Cistern
 - 608. The Spring
 - 609. The Lake
 - 610. The Loch
 - 611. The Pool
 - 612. The Pond
 - 613. The Stream
 - 614. The River
 - 615. The Canal
 - 616. The Road
 - 617. The Bridge
 - 618. The Mill
 - 619. The Church
 - 620. The School
 - 621. The House
 - 622. The Barn
 - 623. The Garden
 - 624. The Pond
 - 625. The Field
 - 626. The Wood
 - 627. The Stream
 - 628. The Path
 - 629. The Wall
 - 630. The Fence
 - 631. The Gate
 - 632. The Tower
 - 633. The Chapel
 - 634. The Vault
 - 635. The Crypt
 - 636. The Tomb
 - 637. The Monument
 - 638. The Obelisk
 - 639. The Column
 - 640. The Statue
 - 641. The Fountain
 - 642. The Well
 - 643. The Cistern
 - 644. The Spring
 - 645. The Lake
 - 646. The Loch
 - 647. The Pool
 - 648. The Pond
 - 649. The Stream
 - 650. The River
 - 651. The Canal
 - 652. The Road
 - 653. The Bridge
 - 654. The Mill
 - 655. The Church
 - 656. The School
 - 657. The House
 - 658. The Barn
 - 659. The Garden
 - 660. The Pond
 - 661. The Field
 - 662. The Wood
 - 663. The Stream
 - 664. The Path
 - 665. The Wall
 - 666. The Fence
 - 667. The Gate
 - 668. The Tower
 - 669. The Chapel
 - 670. The Vault
 - 671. The Crypt
 - 672. The Tomb
 - 673. The Monument
 - 674. The Obelisk
 - 675. The Column
 - 676. The Statue
 - 677. The Fountain
 - 678. The Well
 - 679. The Cistern
 - 680. The Spring
 - 681. The Lake
 - 682. The Loch
 - 683. The Pool
 - 684. The Pond
 - 685. The Stream
 - 686. The River
 - 687. The Canal
 - 688. The Road
 - 689. The Bridge
 - 690. The Mill
 - 691. The Church
 - 692. The School
 - 693. The House
 - 694. The Barn
 - 695. The Garden
 - 696. The Pond
 - 697. The Field
 - 698. The Wood
 - 699. The Stream
 - 700. The Path
 - 701. The Wall
 - 702. The Fence
 - 703. The Gate
 - 704. The Tower
 - 705. The Chapel
 - 706. The Vault
 - 707. The Crypt
 - 708. The Tomb
 - 709. The Monument
 - 710. The Obelisk
 - 711. The Column
 - 712. The Statue
 - 713. The Fountain
 - 714. The Well
 - 715. The Cistern
 - 716. The Spring
 - 717. The Lake
 - 718. The Loch
 - 719. The Pool
 - 720. The Pond
 - 721. The Stream
 - 722. The River
 - 723. The Canal
 - 724. The Road
 - 725. The Bridge
 - 726. The Mill
 - 727. The Church
 - 728. The School
 - 729. The House
 - 730. The Barn
 - 731. The Garden
 - 732. The Pond
 - 733. The Field
 - 734. The Wood
 - 735. The Stream
 - 736. The Path
 - 737. The Wall
 - 738. The Fence
 - 739. The Gate
 - 740. The Tower
 - 741. The Chapel
 - 742. The Vault
 - 743. The Crypt
 - 744. The Tomb
 - 745. The Monument
 - 746. The Obelisk
 - 747. The Column
 - 748. The Statue
 - 749. The Fountain
 - 750. The Well
 - 751. The Cistern
 - 752. The Spring
 - 753. The Lake
 - 754. The Loch
 - 755. The Pool
 - 756. The Pond
 - 757. The Stream
 - 758. The River
 - 759. The Canal
 - 760. The Road
 - 761. The Bridge
 - 762. The Mill
 - 763. The Church
 - 764. The School
 - 765. The House
 - 766. The Barn
 - 767. The Garden
 - 768. The Pond
 - 769. The Field
 - 770. The Wood
 - 771. The Stream
 - 772. The Path
 - 773. The Wall
 - 774. The Fence
 - 775. The Gate
 - 776. The Tower
 - 777. The Chapel
 - 778. The Vault
 - 779. The Crypt
 - 780. The Tomb
 - 781. The Monument
 - 782. The Obelisk
 - 783. The Column
 - 784. The Statue
 - 785. The Fountain
 - 786. The Well
 - 787. The Cistern
 - 788. The Spring
 - 789. The Lake
 - 790. The Loch
 - 791. The Pool
 - 792. The Pond
 - 793. The Stream
 - 794. The River
 - 795. The Canal
 - 796. The Road
 - 797. The Bridge
 - 798. The Mill
 - 799. The Church
 - 800. The School
 - 801. The House
 - 802. The Barn
 - 803. The Garden
 - 804. The Pond
 - 805. The Field
 - 806. The Wood
 - 807. The Stream
 - 808. The Path
 - 809. The Wall
 - 810. The Fence
 - 811. The Gate
 - 812. The Tower
 - 813. The Chapel
 - 814. The Vault
 - 815. The Crypt
 - 816. The Tomb
 - 817. The Monument
 - 818. The Obelisk
 - 819. The Column
 - 820. The Statue
 - 821. The Fountain
 - 822. The Well
 - 823. The Cistern
 - 824. The Spring
 - 825. The Lake
 - 826. The Loch
 - 827. The Pool
 - 828. The Pond
 - 829. The Stream
 - 830. The River
 - 831. The Canal
 - 832. The Road
 - 833. The Bridge
 - 834. The Mill
 - 835. The Church
 - 836. The School
 - 837. The House
 - 838. The Barn
 - 839. The Garden
 - 840. The Pond
 - 841. The Field
 - 842. The Wood
 - 843. The Stream
 - 844. The Path
 - 845. The Wall
 - 846. The Fence
 - 847. The Gate
 - 848. The Tower
 - 849. The Chapel
 - 850. The Vault
 - 851. The Crypt
 - 852. The Tomb
 - 853. The Monument
 - 854. The Obelisk
 - 855. The Column
 - 856. The Statue
 - 857. The Fountain
 - 858. The Well
 - 859. The Cistern
 - 860. The Spring
 - 861. The Lake
 - 862. The Loch
 - 863. The Pool
 - 864. The Pond
 - 865. The Stream
 - 866. The River
 - 867. The Canal
 - 868. The Road
 - 869. The Bridge
 - 870. The Mill
 - 871. The Church
 - 872. The School
 - 873. The House
 - 874. The Barn
 - 875. The Garden
 - 876. The Pond
 - 877. The Field
 - 878. The Wood
 - 879. The Stream
 - 880. The Path
 - 881. The Wall
 - 882. The Fence
 - 883. The Gate
 - 884. The Tower
 - 885. The Chapel
 - 886. The Vault
 - 887. The Crypt
 - 888. The Tomb
 - 889. The Monument
 - 890. The Obelisk
 - 891. The Column
 - 892. The Statue
 - 893. The Fountain
 - 894. The Well
 - 895. The Cistern
 - 896. The Spring
 - 897. The Lake
 - 898. The Loch
 - 899. The Pool
 - 900. The Pond
 - 901. The Stream
 - 902. The River
 - 903. The Canal
 - 904. The Road
 - 905. The Bridge
 - 906. The Mill
 - 907. The Church
 - 908. The School
 - 909. The House
 - 910. The Barn
 - 911. The Garden
 - 912. The Pond
 - 913. The Field
 - 914. The Wood
 - 915. The Stream
 - 916. The Path
 - 917. The Wall
 - 918. The Fence
 - 919. The Gate
 - 920. The Tower
 - 921. The Chapel
 - 922. The Vault
 - 923. The Crypt
 - 924. The Tomb
 - 925. The Monument
 - 926. The Obelisk
 - 927. The Column
 - 928. The Statue
 - 929. The Fountain
 - 930. The Well
 - 931. The Cistern
 - 932. The Spring
 - 933. The Lake
 - 934. The Loch
 - 935. The Pool
 - 936. The Pond
 - 937. The Stream
 - 938. The River
 - 939. The Canal
 - 940. The Road
 - 941. The Bridge
 - 942. The Mill
 - 943. The Church
 - 944. The School
 - 945. The House
 - 946. The Barn
 - 947. The Garden
 - 948. The Pond
 - 949. The Field
 - 950. The Wood
 - 951. The Stream
 - 952. The Path
 - 953. The Wall
 - 954. The Fence
 - 955. The Gate
 - 956. The Tower
 - 957. The Chapel
 - 958. The Vault
 - 959. The Crypt
 - 960. The Tomb
 - 961. The Monument
 - 962. The Obelisk
 - 963. The Column
 - 964. The Statue
 - 965. The Fountain
 - 966. The Well
 - 967. The Cistern
 - 968. The Spring
 - 969. The Lake
 - 970. The Loch
 - 971. The Pool
 - 972. The Pond
 - 973. The Stream
 - 974. The River
 - 975. The Canal
 - 976. The Road
 - 977. The Bridge
 - 978. The Mill
 - 979. The Church
 - 980. The School
 - 981. The House
 - 982. The Barn
 - 983. The Garden
 - 984. The Pond
 - 985. The Field
 - 986. The Wood
 - 987. The Stream
 - 988. The Path
 - 989. The Wall
 - 990. The Fence
 - 991. The Gate
 - 992. The Tower
 - 993. The Chapel
 - 994. The Vault
 - 995. The Crypt
 - 996. The Tomb
 - 997. The Monument
 - 998. The Obelisk
 - 999. The Column
 - 1000. The Statue



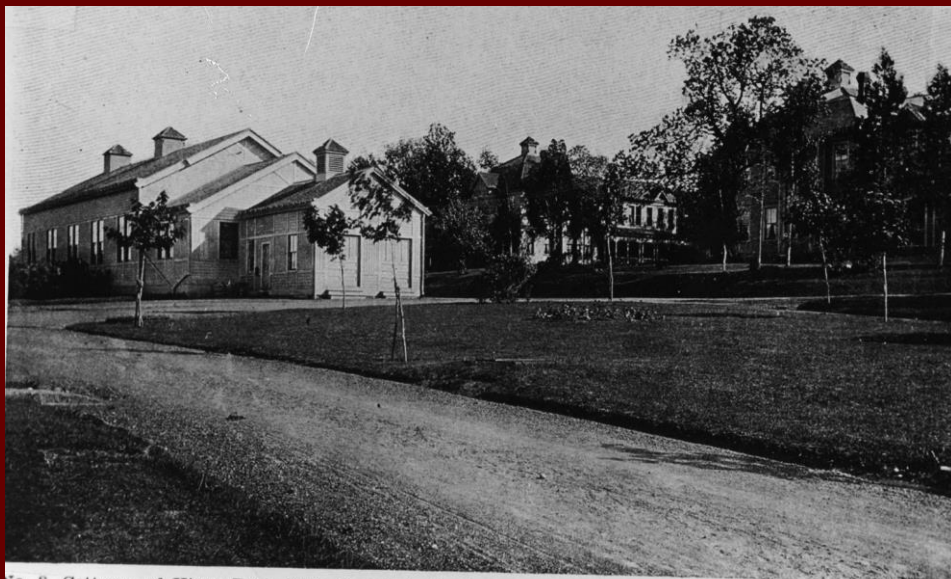








ENTRANCE TO STATE HOSPITAL, KINGS PARK, LONG ISLAND, N. Y.



No. 8—Cottages of Kings Park State Hospital, N. Y.





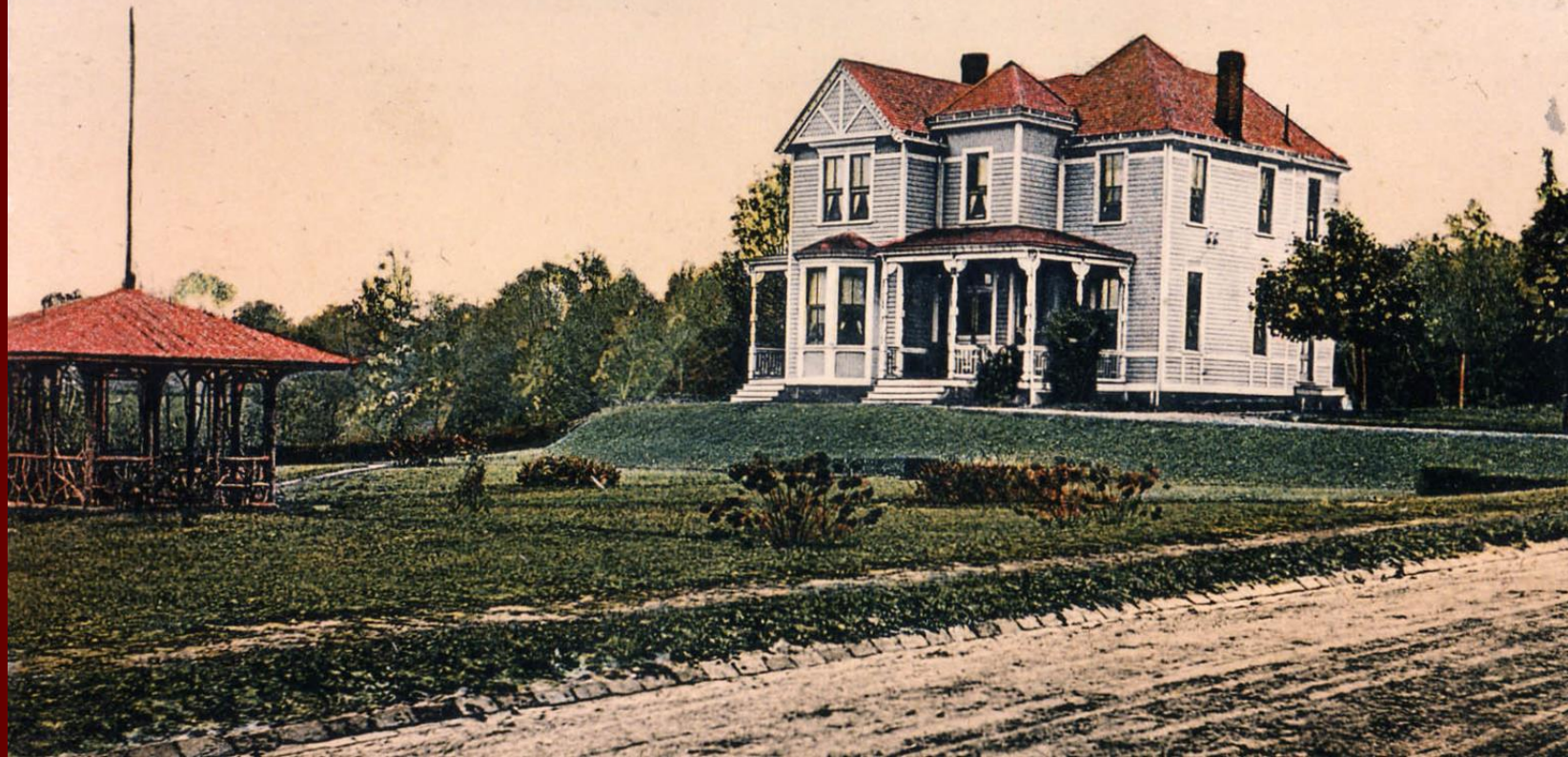
Hosp Blvd looking at Club House, bldg's C & D







"Cottage I", The Hospital, Kings Park, L. I.



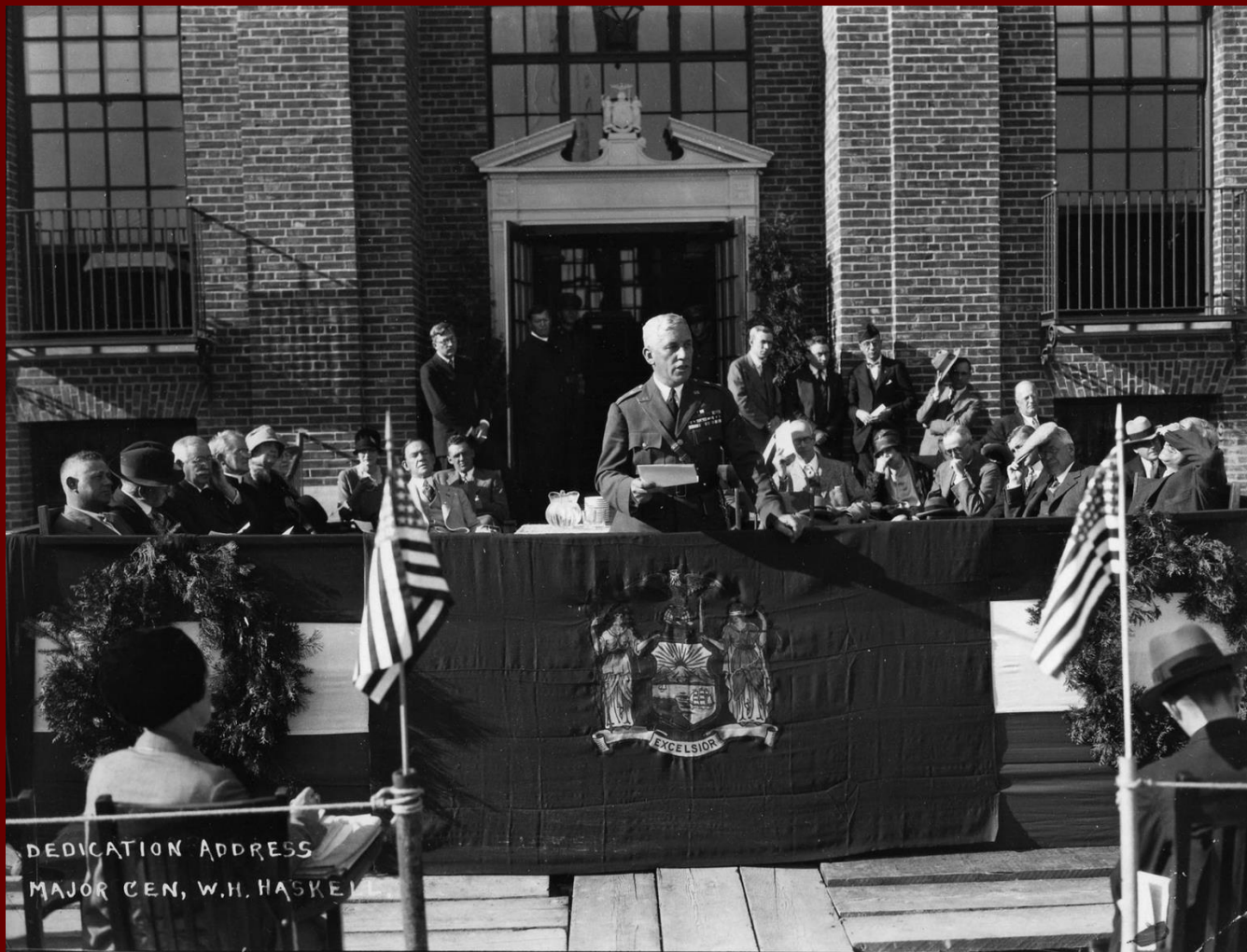






Main Office, Kings Park State Hospital, Kings Park, L. I.





DEDICATION ADDRESS
MAJOR GEN. W.H. HASKE

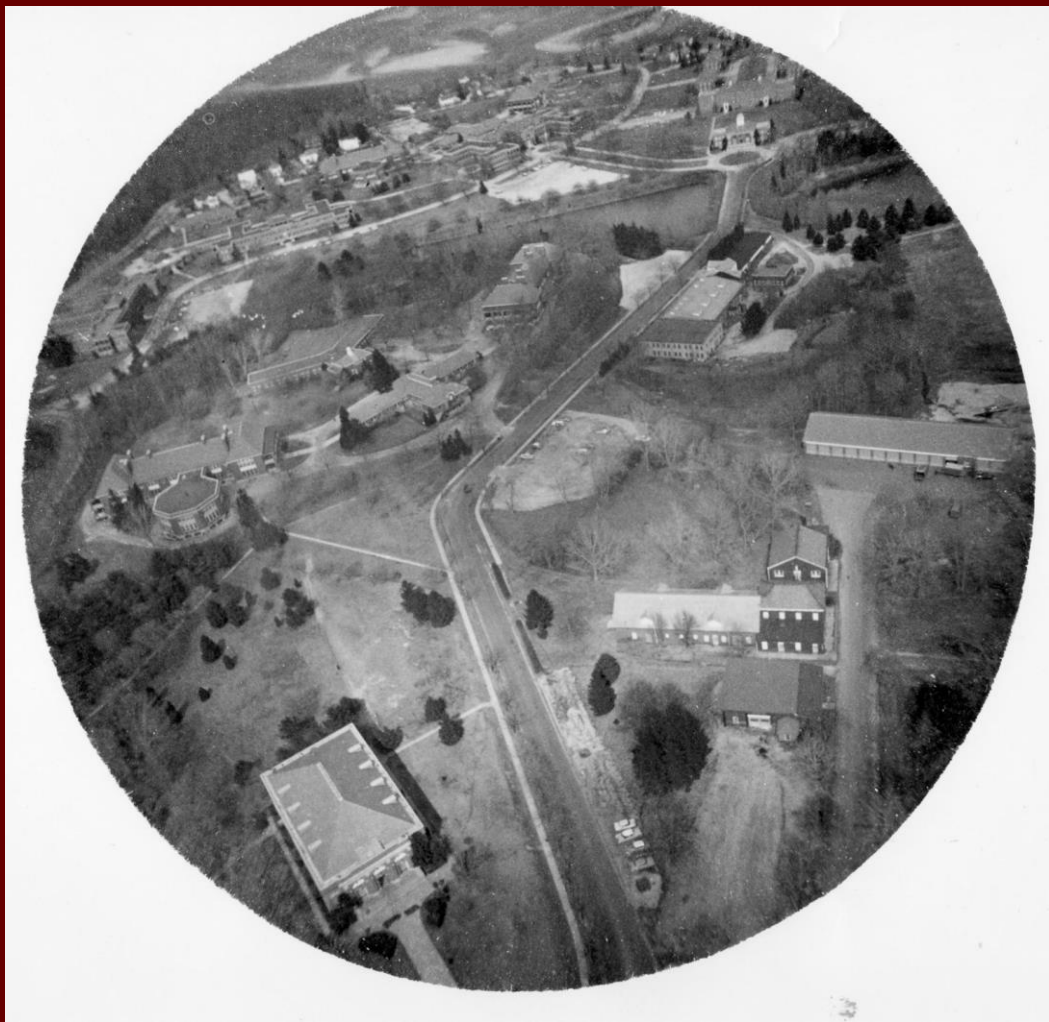


SOME OF THE AUDIENCE.



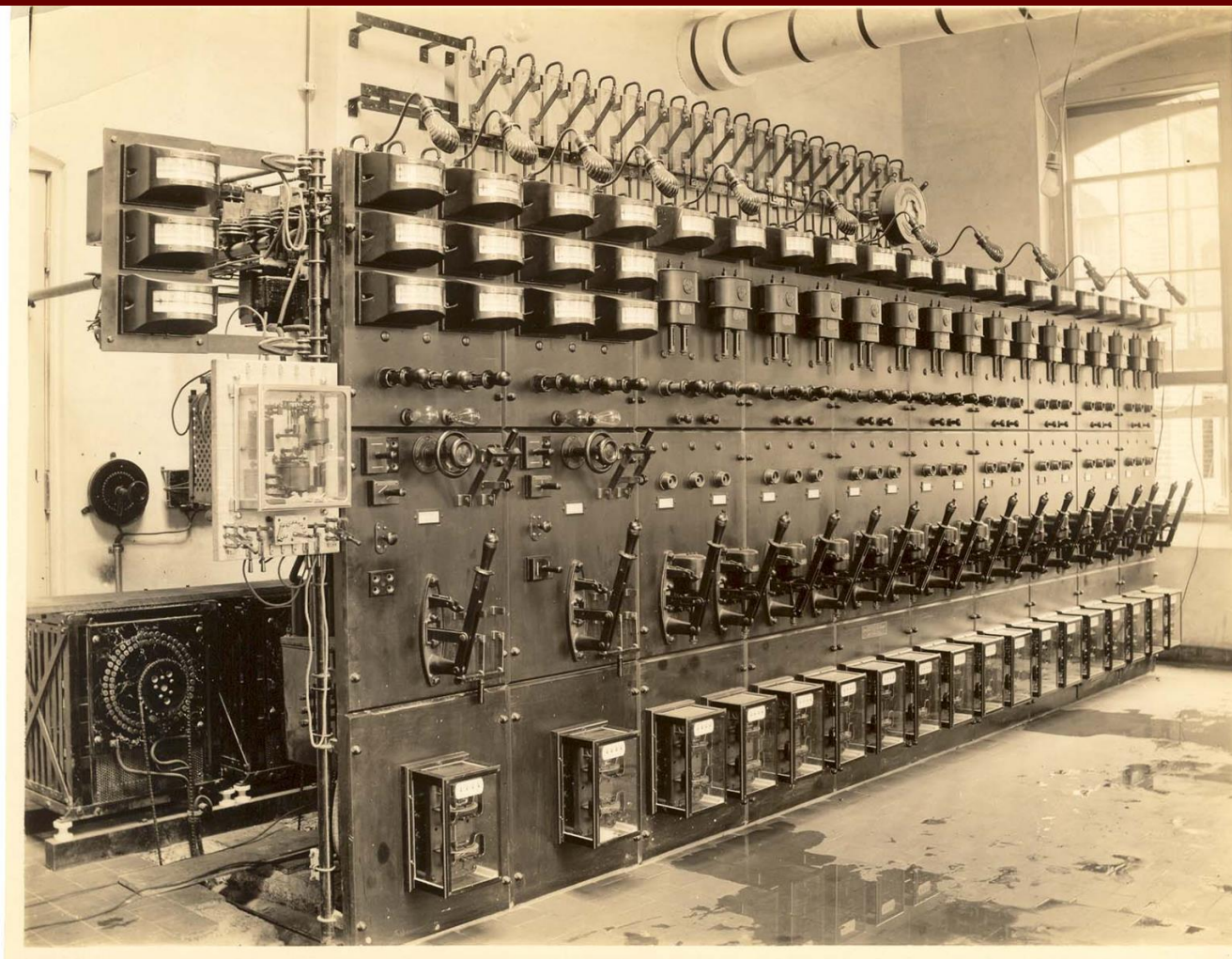


At State Park, Kent Park State Hotel











THE PICCERY AT THE STATE HOSPITAL.





PAINT & TIN SMITH SHOPS, K.P.S.H.



SAN REMO





HARNEO'S POND





Sullivan's House





NOV 1962





Back of Bungalow



OCT 1959





69 • AUG





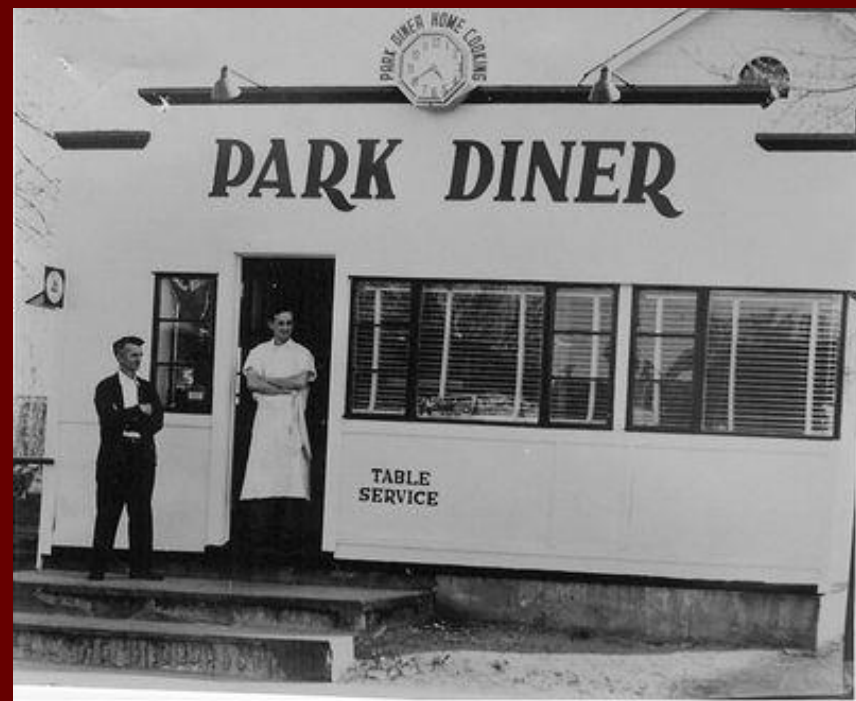
Looking across Harrison's Pond, Oct. or Nov. 1978's





DOWNTOWN







Lower Broadway (Main St.) ca 1923 Kings Park, 1923





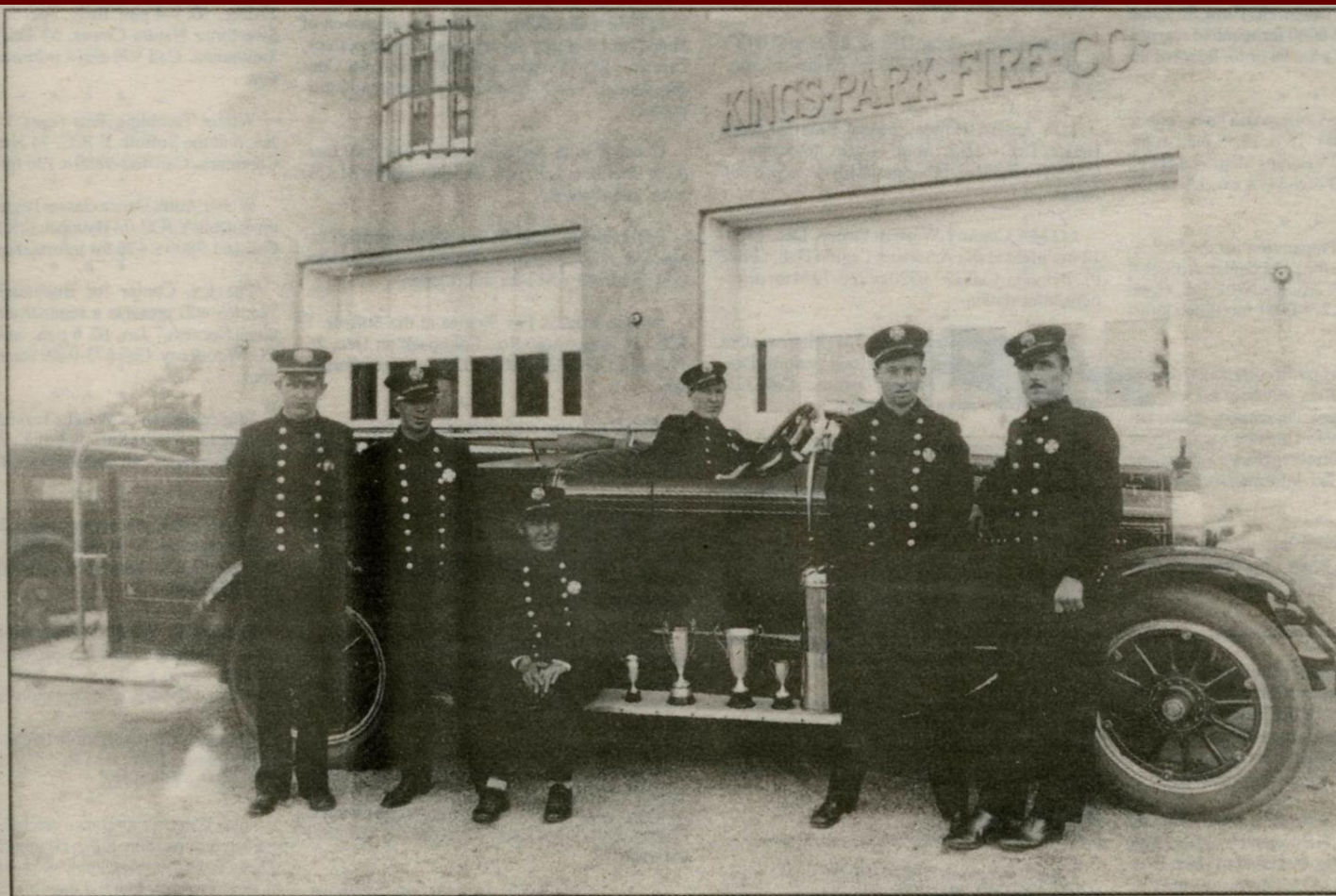








FIRE DEPARTMENT



Lincoln Limousine circa 1934. Tournament Day, Kings Park Fire Department, August 1936. Pictured (l-r) Herb Ballard, Sr., Ja McWilliams, Paul Butch, Robert Strain, Sr. (driver), Jason Griffin, and George Tetrault.





Jacq Bowling - Tom Harked - Stein - John Hancock - Vera Zorin
Harry Spitzer - Fred Busse' - Henry Buchanan - Tatrau
Bill HSWilliams - Bill Dolan - Harry Kastens - Ed Hankuski
'33 ? '34 ? '35 ?

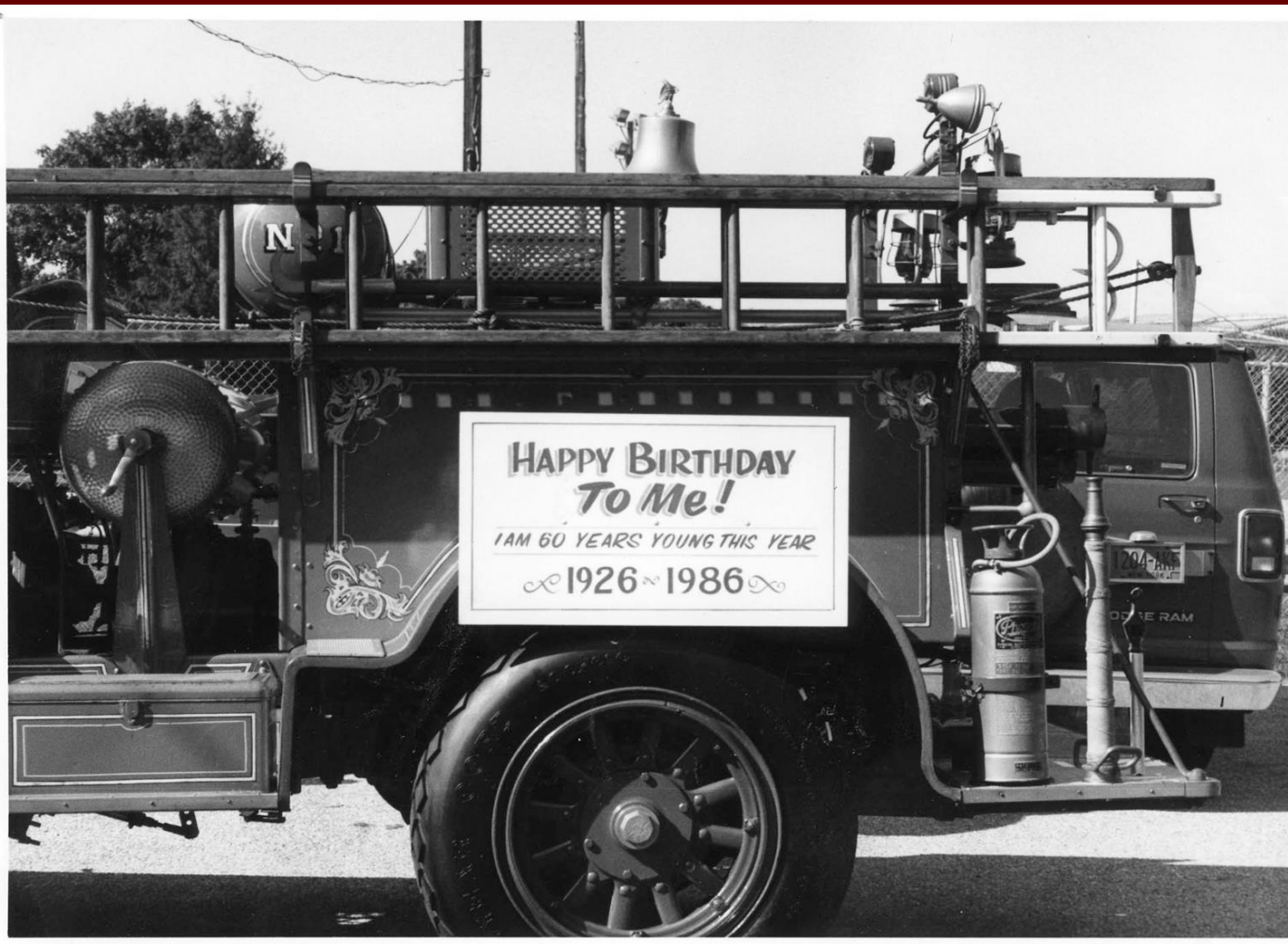
Wote

Vera Zorina
World renowned ballet
dancer & movie star
who resided for many
years in Fort Salonga.

KILLED IN THE
BATTLE OF THE
CORAL SEA —
WORLD WAR II

Photo taken
circa 1941

Photo donated by
KPFD 5/20/98





Bob
Springsteen

C-1950
KID'S Patch

VINNY
MANKUSI



Bill McWilliams

Dec-1954



KINGS PARK LONG ISLAND TYPE 65 TRIPLE









PROTECTORS WITH PRIDE: Kings Park Fire Chief John Gilmartin (l) and Assistant Chief Tom Dolan may extinguish blazes when the need arises but that has no bearing on the pride they have for serving the community. Residents are invited to tour the firehouse during the Kings Park celebration to see the big red engines, films and CPR demonstrations.

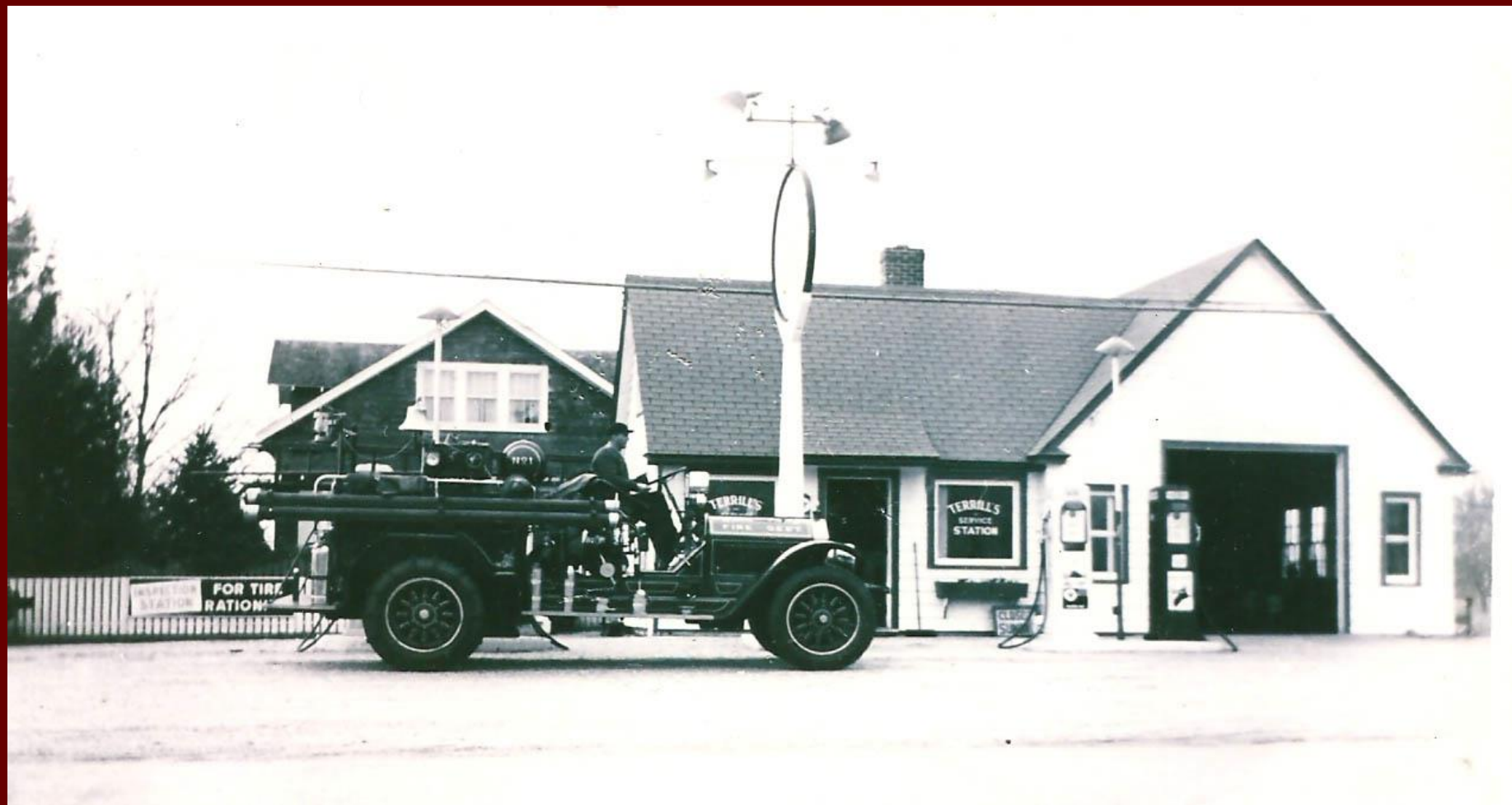






ERECTED BY THE
VETERANS OF FOREIGN WARS
NISSEQUOGUE POST 5796
KINGS PARK, N.Y.





3-10-80 Old NorthPort Road behind Compactor



April 1980 Field in the Hospital on 25A





1st Christmas Parade 12/18/82



Christmas Parade 1982



Fire Truck 1/29/82



Fire Trucks



Company Two on Memorial Day 1982



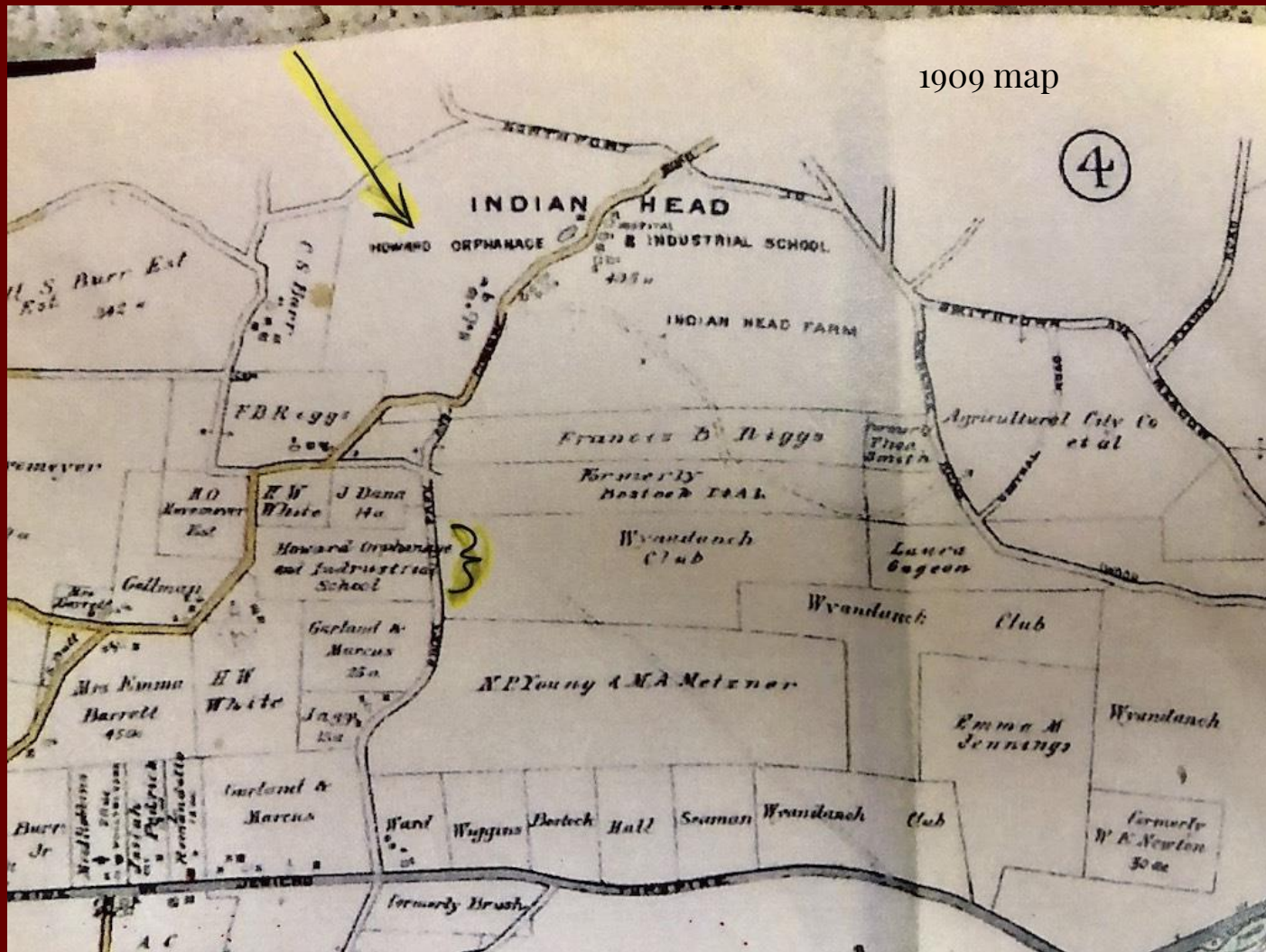




HOWARD
ORPHANAGE
AND
INDUSTRIAL
SCHOOL

1909 map

Indian Head Road
Between
Old Northport
Road and
Kings Park Road





























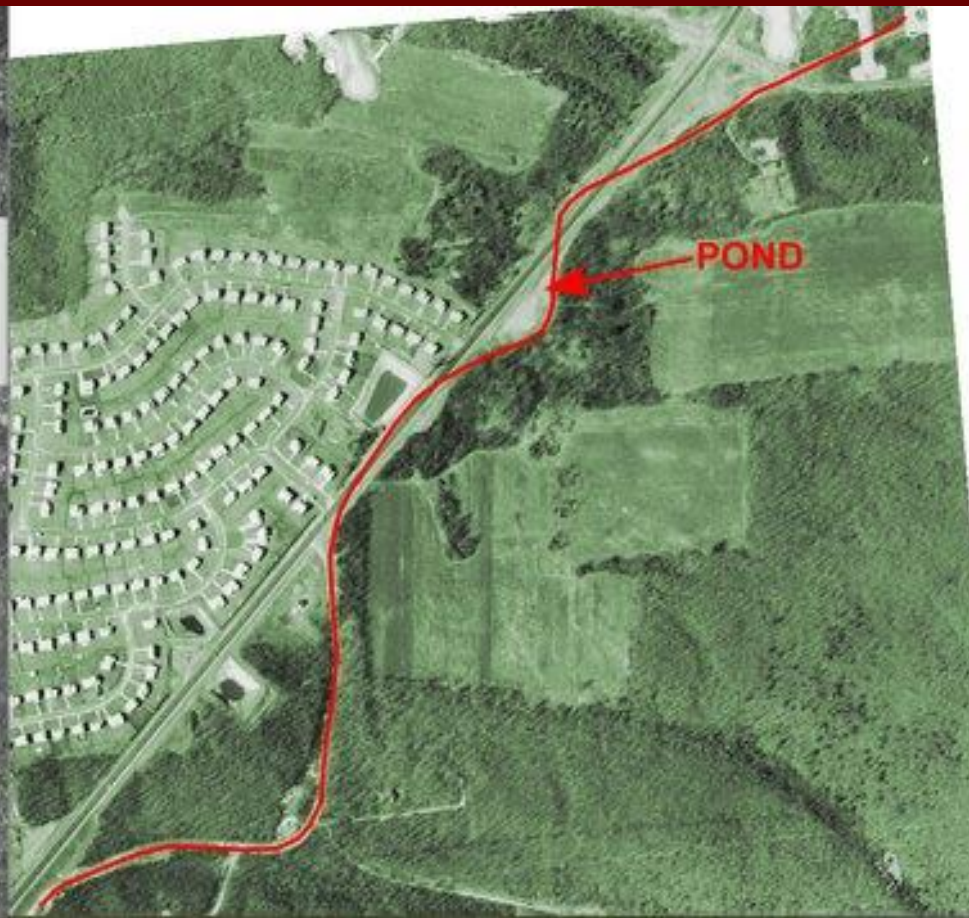
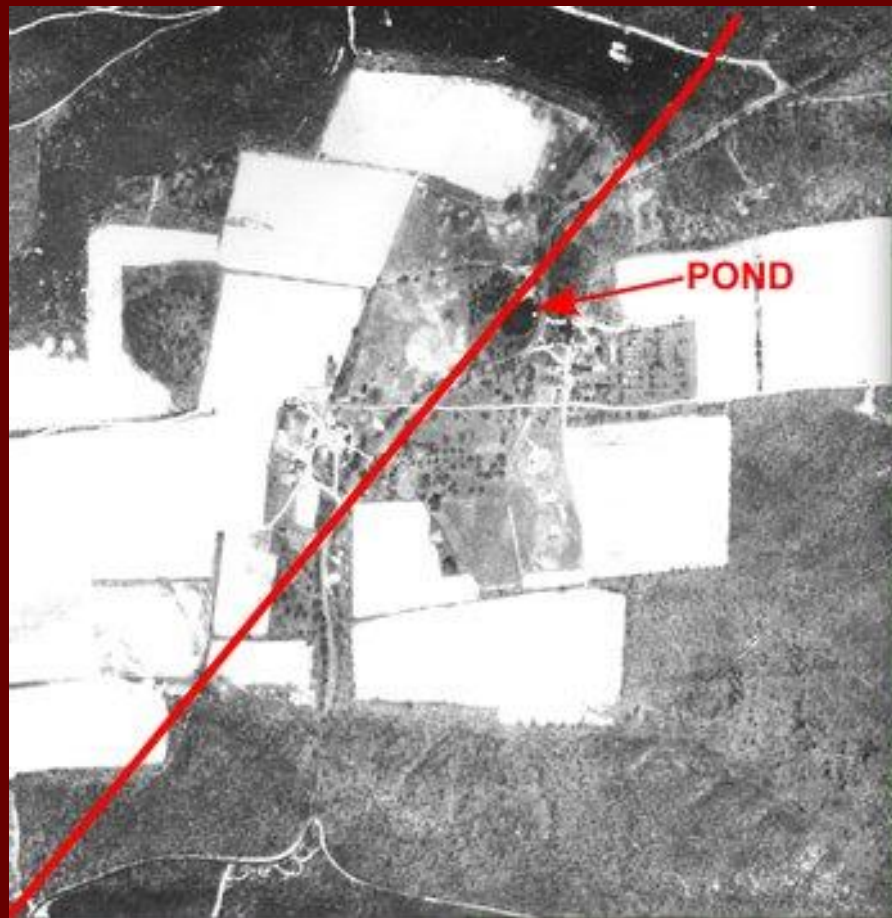


ITHWARD ORPHANAGE AND INDUSTRIAL SCHOOL.

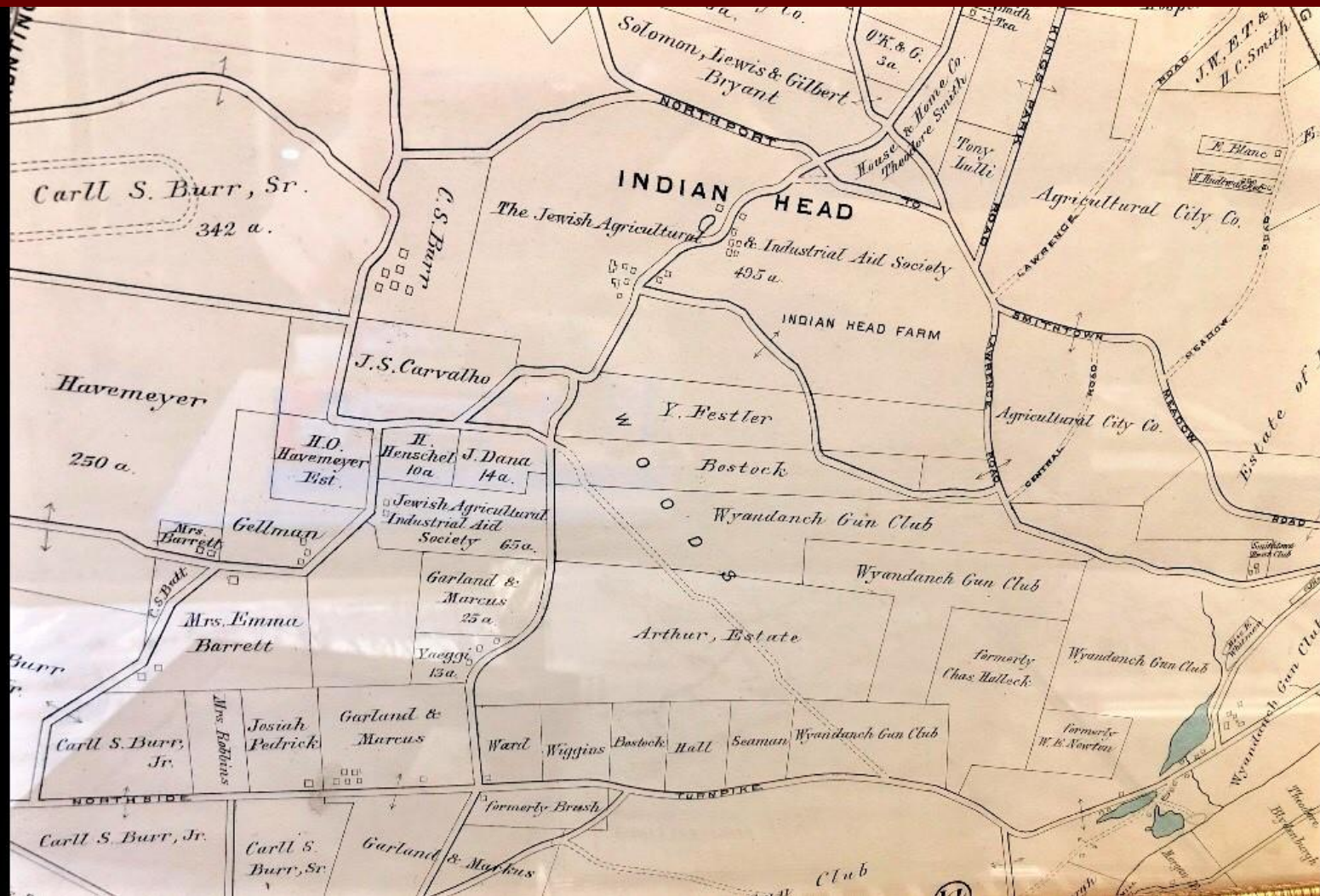
The Ithward Orphanage and Industrial School was founded in 1870 and is now one of the largest and best equipped of its kind in the State. It is situated on a beautiful site, and the buildings are of the most modern and substantial construction. The school is open to all children of the State, and the tuition is free. The school is under the management of the State Board of Charities, and the children are educated in the various branches of learning, and are prepared for college or for the various trades and professions. The school is a great blessing to the State, and the children are well cared for and educated.

ITHWARD ORPHANAGE AND INDUSTRIAL SCHOOL KINGS PARK, LONG ISLAND.





JEWISH AGRICULTURAL
AND
INDUSTRIAL AID
SOCIETY



A Training Farm for Jews.

The philanthropic people who are establishing an agricultural school for Jews near Kings Park, L. I., are beginning a good work. They are modest about it,

Brooklyn Daily Eagle Jan 30 1905

132,70



132,70

pursuits.

The Jewish Agricultural and Industrial Aid Society was established as a consequence of a large and continuous immigration of Jews suffering from Russian persecution, and the facilities offered in this country for acquiring land by these persons, debarred from similar privileges in the land of their nativity, gave a favorable impulse to the movements, which was augmented by the creation of the Baron de Hirsch fund. In 1909 the Jewish Agricultural and Industrial Aid Society took the agricultural matters in charge of the Hirsch fund and since its incorporation has encouraged agricultural employment among immigrant Jews. The practical results from the society's labors

"We do not buy him a farm and start him off without knowing whether he will be a success or not. We test him for a year. A couple of years ago the Jewish Agricultural and Industrial Aid Society of this city bought the Indian Head Farm, at King's Park, Long Island, containing five hundred acres of land, spending something over \$33,000 for it. When a man asks for an opportunity to become a farmer we send him out to this test farm, as we call it. He

New York Tribune Oct 14 1906